



LETATWIN LM-3000PRO

QUICK REFERENCE

【World】

Software download/
Instruction manual download

▶URL : <https://www.max-ltd.co.jp/int/letatwinfan-lm-3000pro/>



【Japan】

Software download

▶URL : <https://www2.max-ltd.co.jp/op/sdp/softwaredownload/site>



Instruction manual download

▶URL : <https://www.max-ltd.co.jp/support/download/op/torisetsu/>



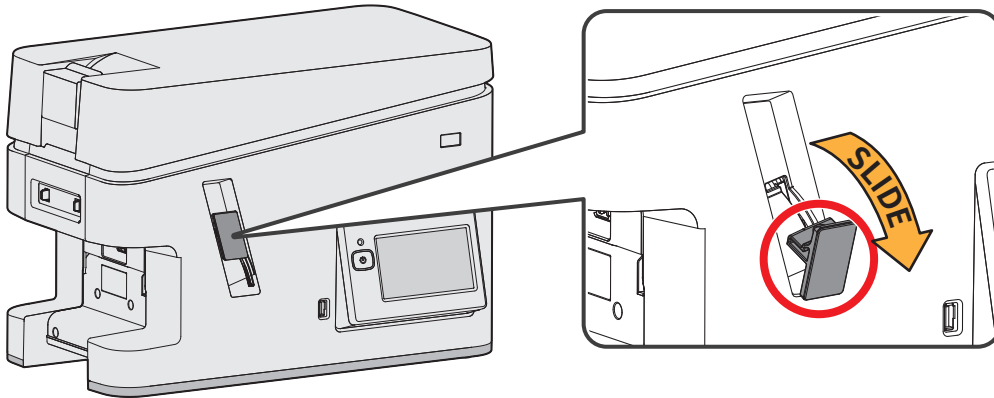
CONTENTS

HOW TO CUT THE CONSUMABLES.....	1
1. GRIP SLEEVE	2
2. TUBE, MAX ID PLATE	4
3. TAPE, MARKING STRIP	11
4. BLOCK MARKER	15
5. INK RIBBON	18
6. REEL STAND	20

How to cut the consumables

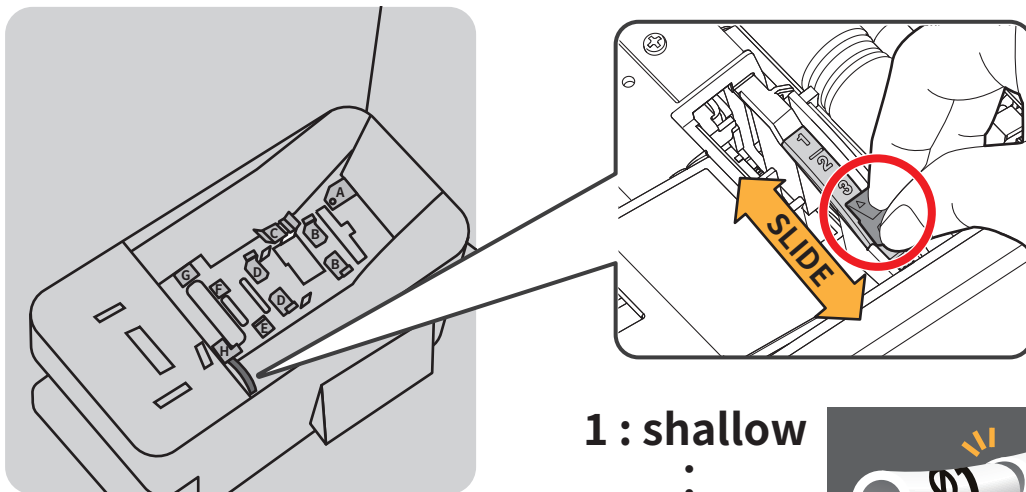
FULL CUT

Push the FULL CUT LEVER.



HALF CUT

Adjusting the Half cutting depth.



1 : shallow

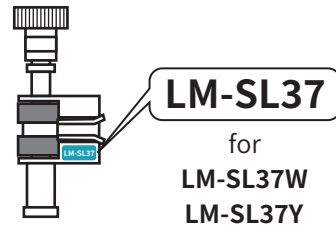
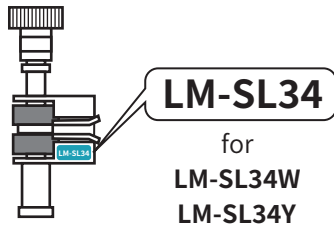
⋮

6 : deep

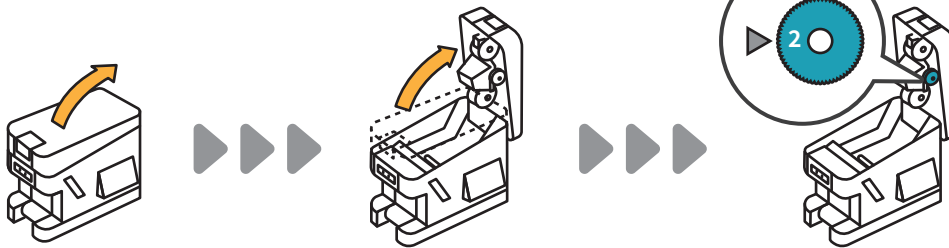


GRIP SLEEVE

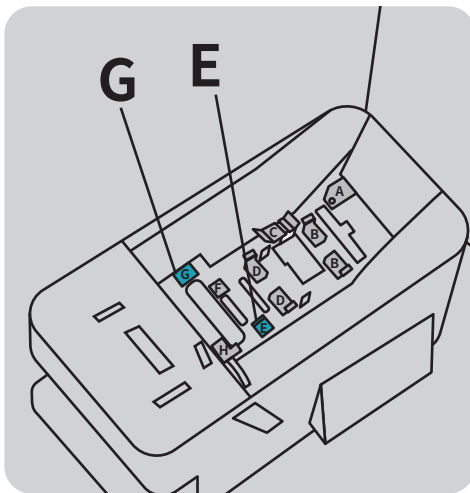
0 Standby



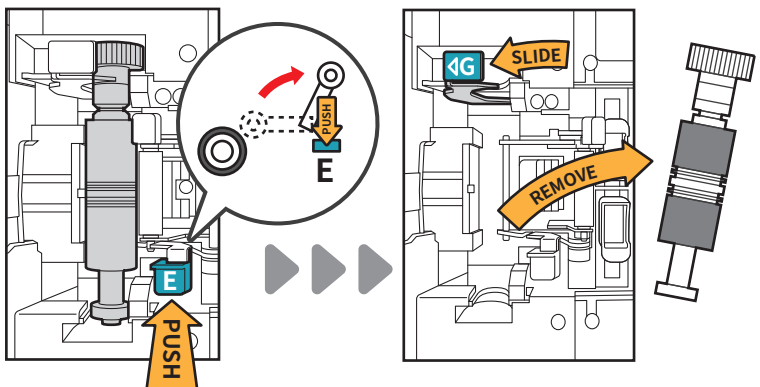
1 Adjusting the printing pressure



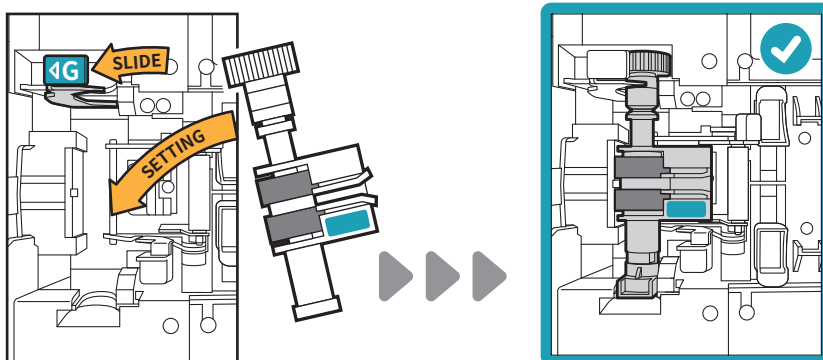
2 Change the platen roller



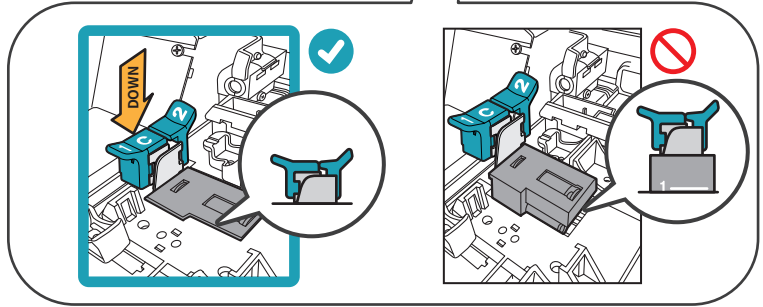
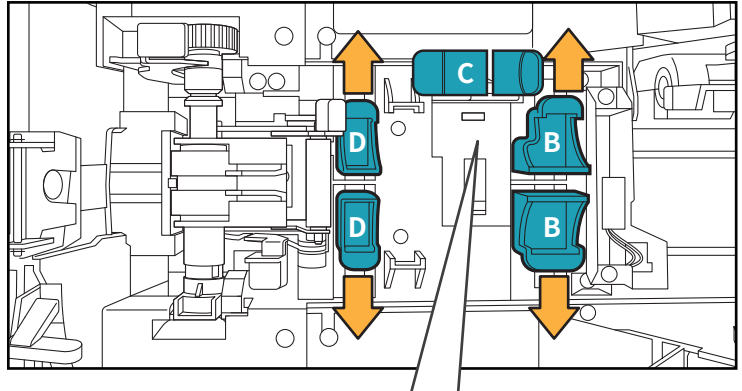
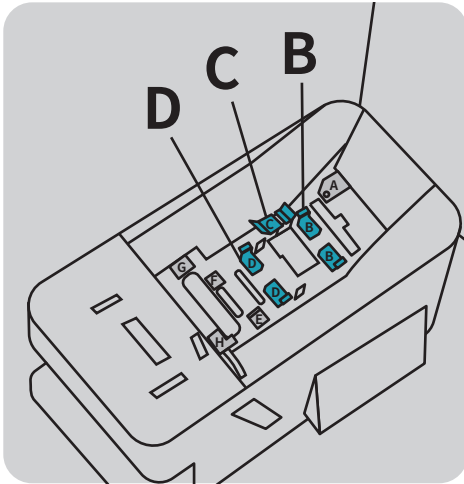
① Remove



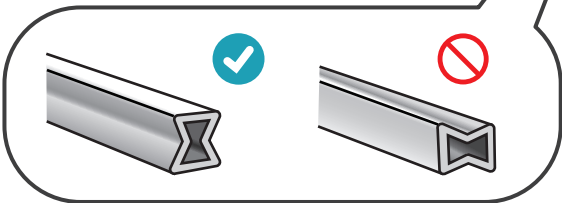
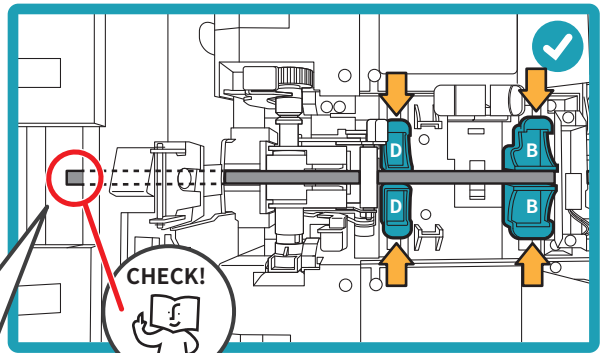
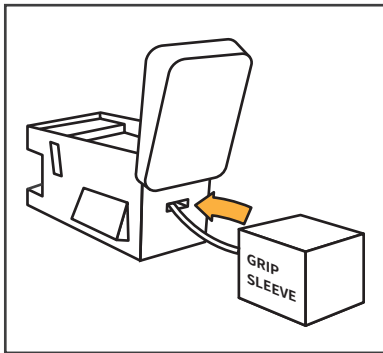
② Setting the platen roller



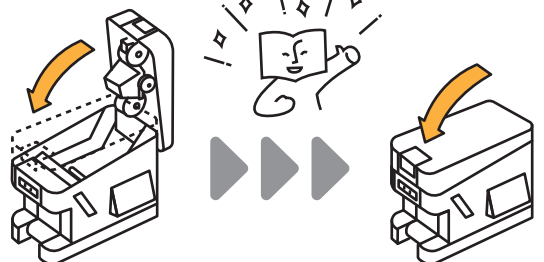
3 Reset the position of levers

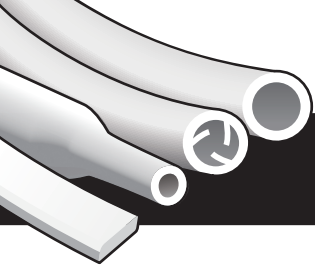


4 Set the GRIP SLEEVE



COMPLETE





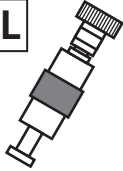
TUBE, MAX ID PLATE

MAX GRIP TUBE / MAX TUBE /
GENERIC TUBE /
HEAT SHRINK TUBE

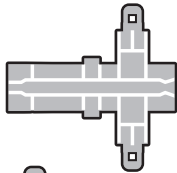
0 Standby

MAX TUBE / GENERIC TUBE

NORMAL



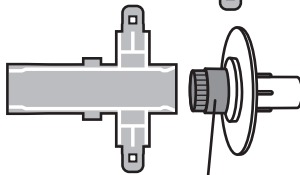
• TUBE
 $\phi 1.5 \sim \phi 2.0$



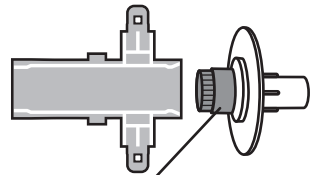
• TUBE
 $\phi 2.5 \sim \phi 6.5$



• TUBE
 $\phi 8.0$



• TUBE
 $\phi 10.0$

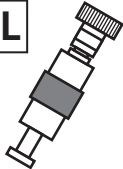


BLACK/
RIBBON FLANGE

BLACK/
RIBBON FLANGE

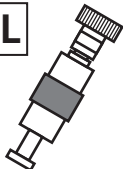
MAX GRIP TUBE / HEAT SHRINK TUBE

NORMAL

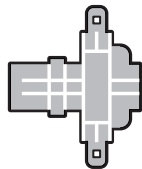


MAX ID PLATE

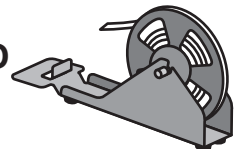
NORMAL



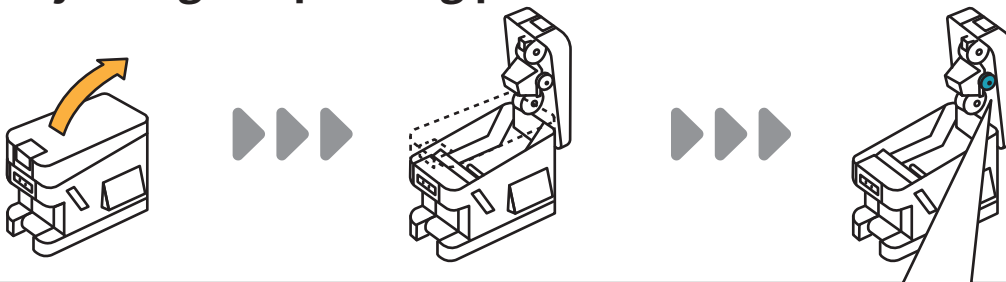
• ID PLATE



• REEL STAND
(P.20)



1 Adjusting the printing pressure



MAX TUBE



GENERIC TUBE



HEAT SHRINK TUBE



MAX ID PLATE

Set to "3"

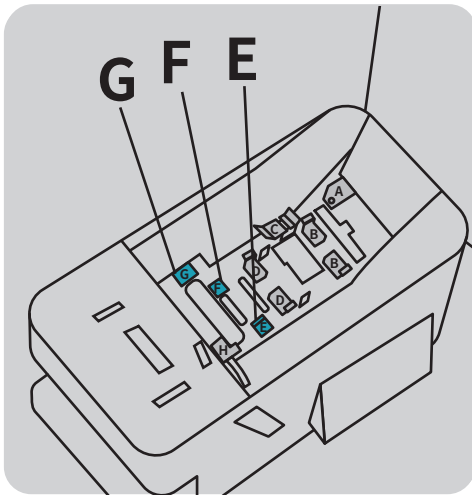


MAX GRIP TUBE

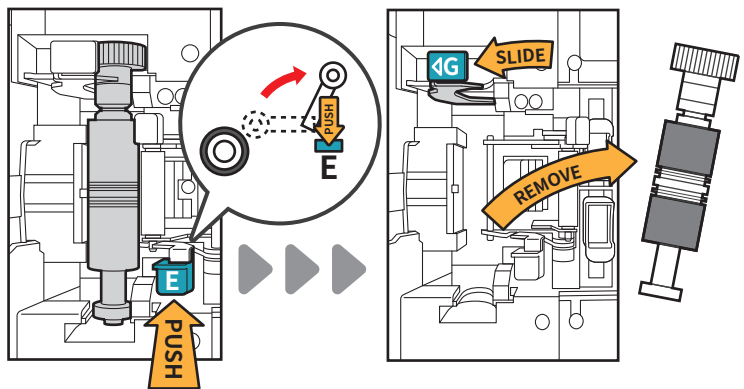
Set to "4"



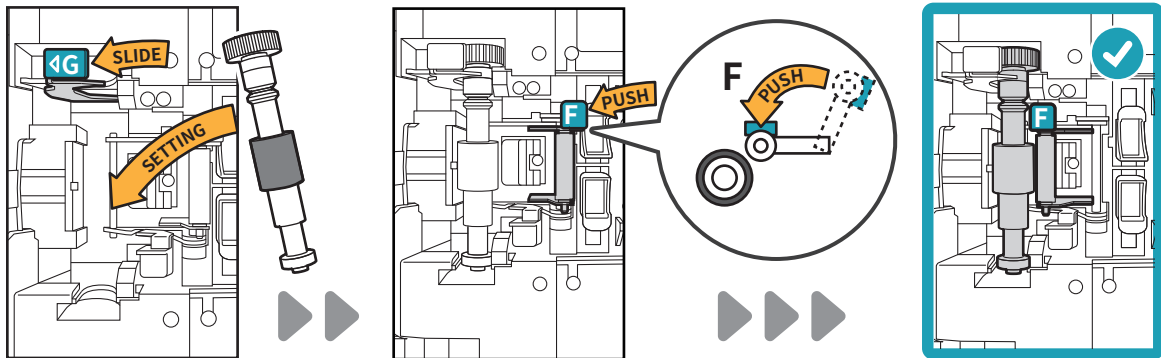
2 Change the platen roller



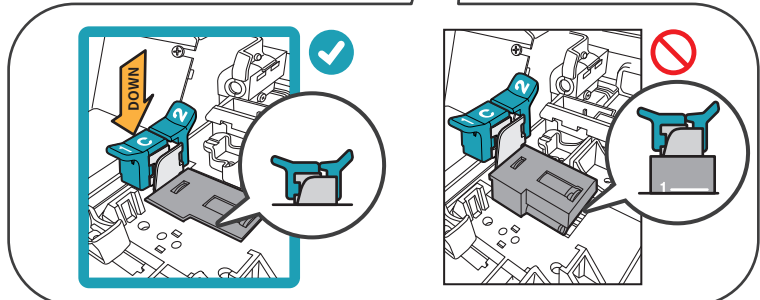
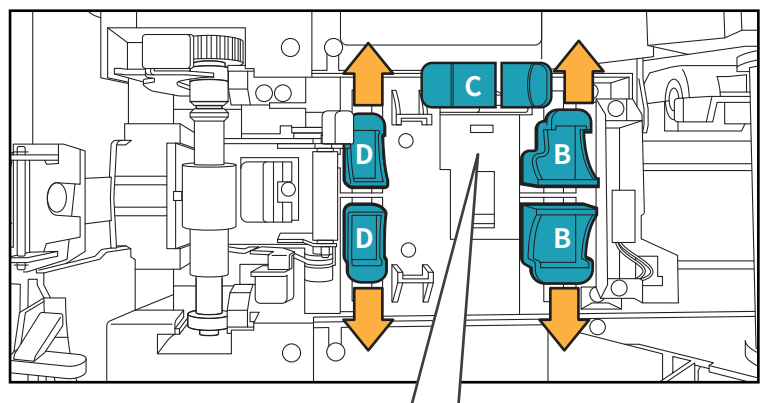
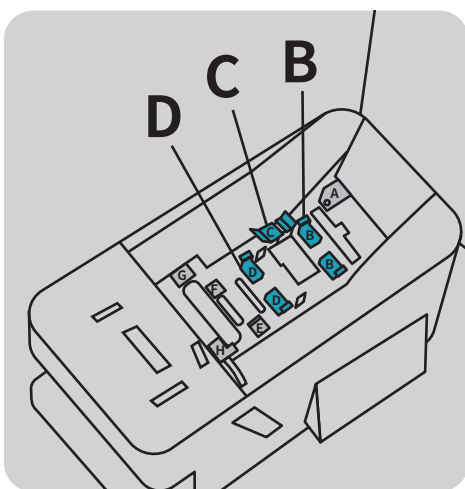
① Remove



② Setting the platen roller



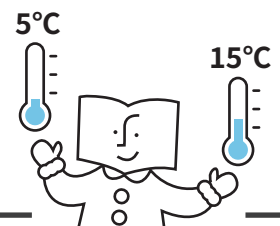
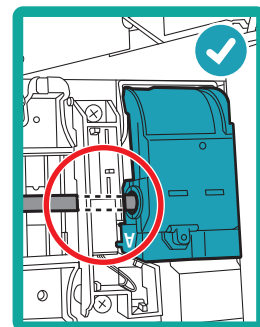
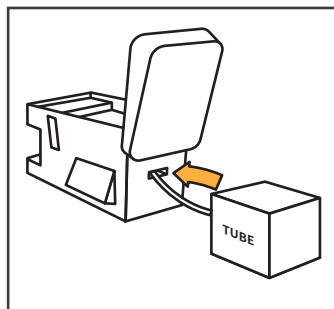
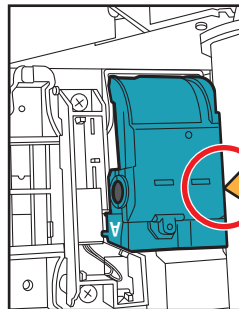
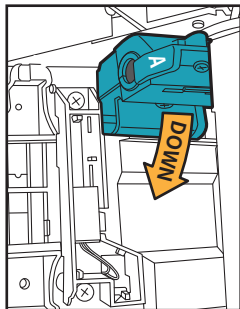
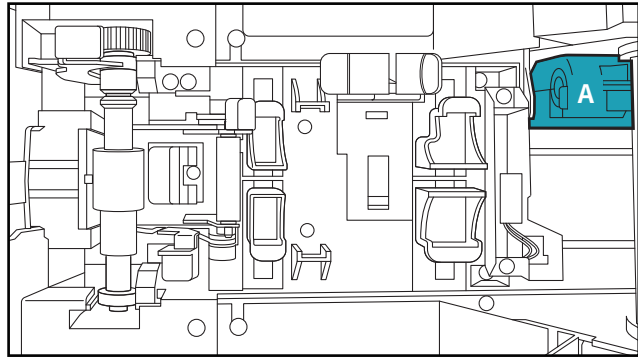
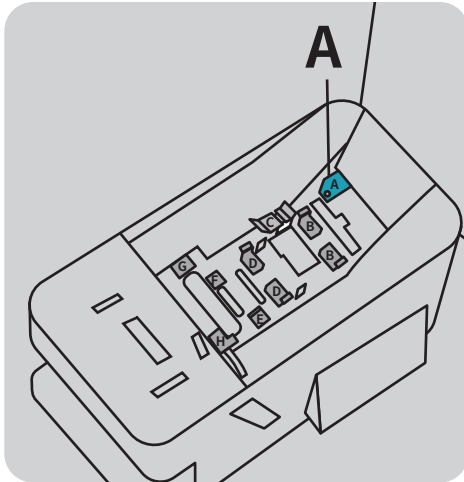
3 Reset the position of levers



Set the tube heater

※ Please use at low temperatures of **5°C to 15°C.**
(41°F to 59°F)

※ Only tubes from 1.5φ to 4.6φ can be used.





$\phi 1.5 \sim \phi 2.0$ → 5

$\phi 2.5 \sim \phi 6.5$ → 4

$\phi 8.0 \sim \phi 10.0$ → 5



$\phi 2.0 \sim \phi 11.5$ → 4

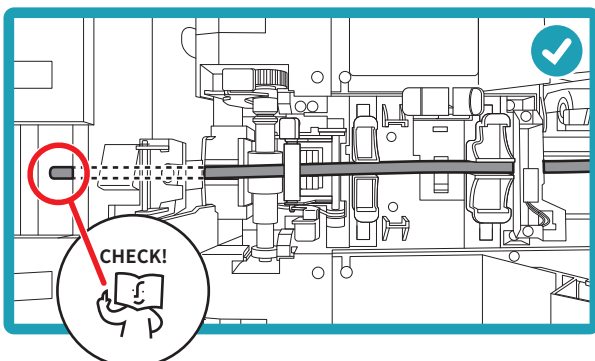
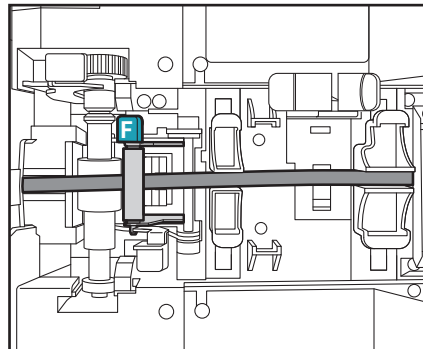
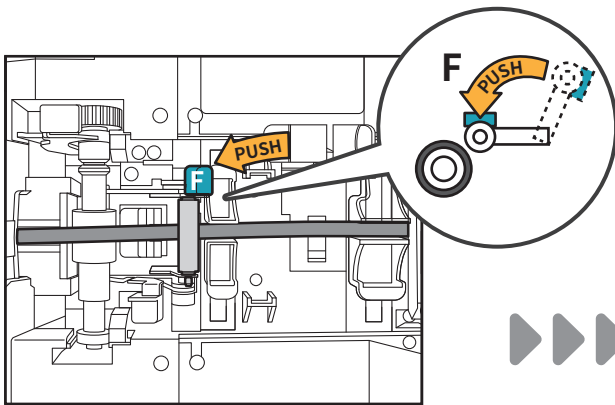
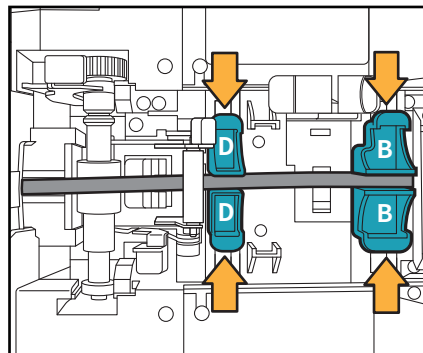
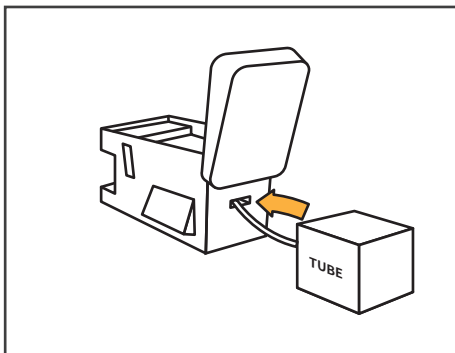
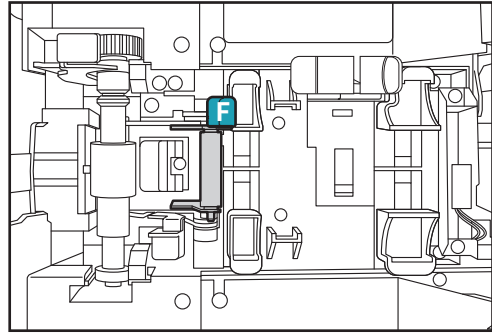
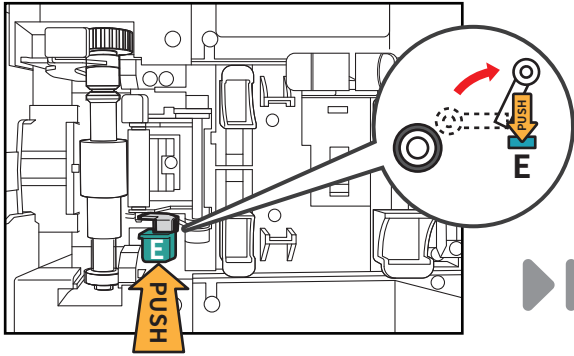
$\phi 12.0 \sim \phi 19.0$ → 4 + 6



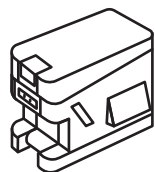
— → 5

4

Set the MAX GRIP TUBE, MAX TUBE and GENERIC TUBE



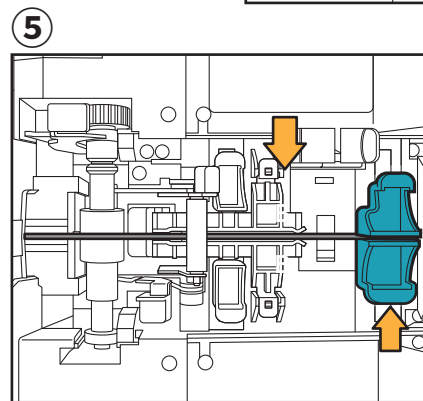
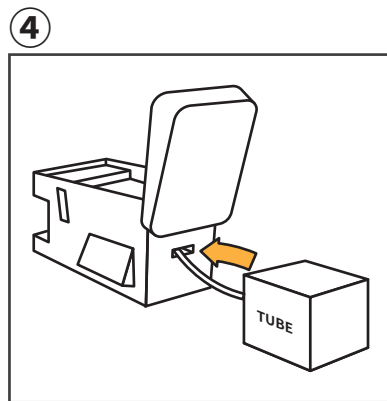
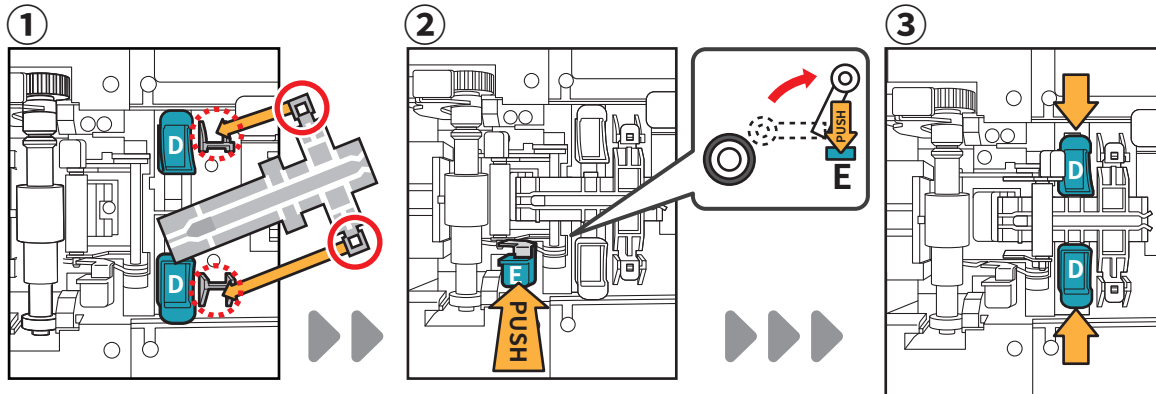
COMPLETE



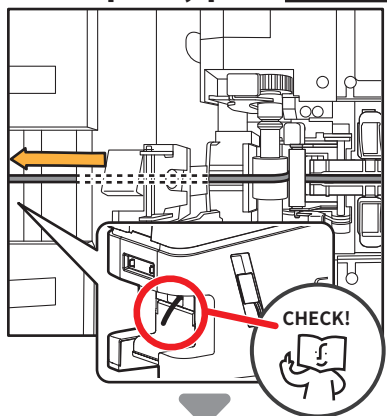
5

Please set the attachment suitable for consumables.

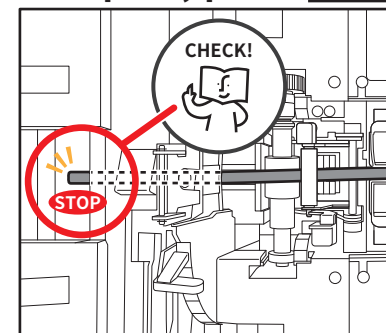
※ Be sure to use only $\phi 1.5, \phi 2.0, \phi 8.0, \phi 10.0$ PVC tubes and ID PLATE.



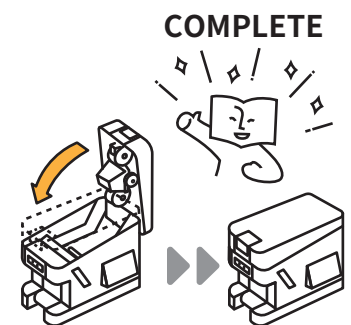
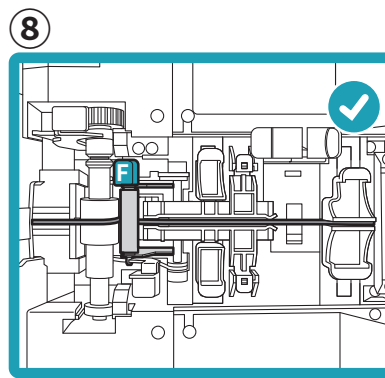
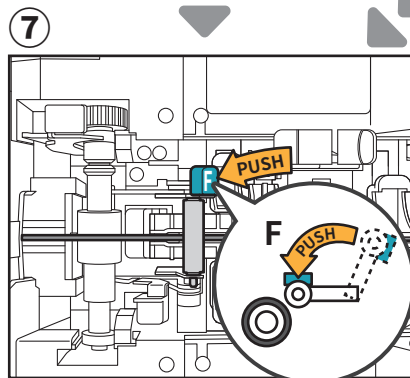
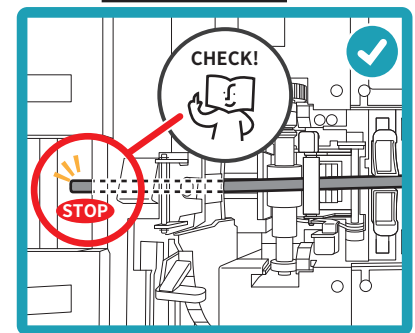
6-1 $\phi 1.5, \phi 2.0$ TUBE



6-2 $\phi 8.0, \phi 10.0$ TUBE



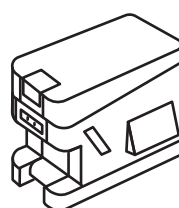
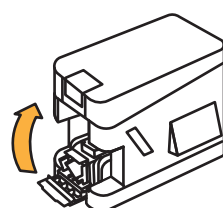
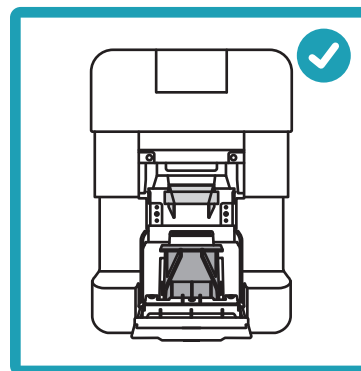
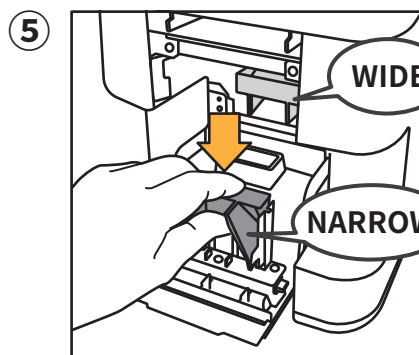
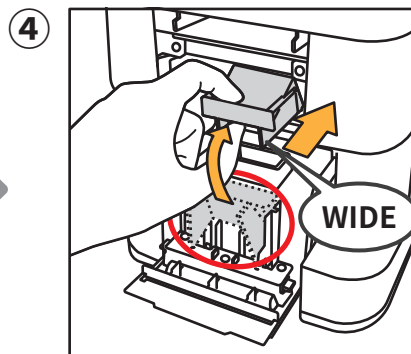
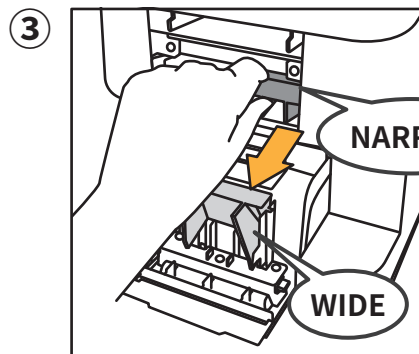
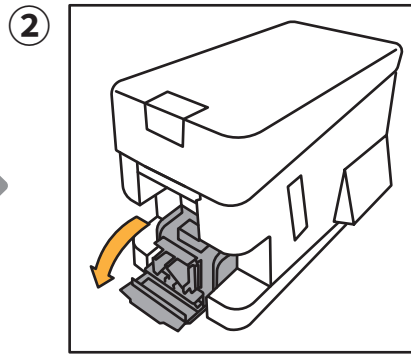
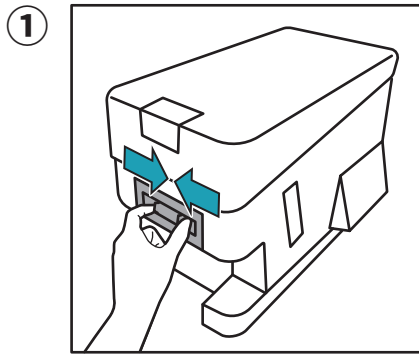
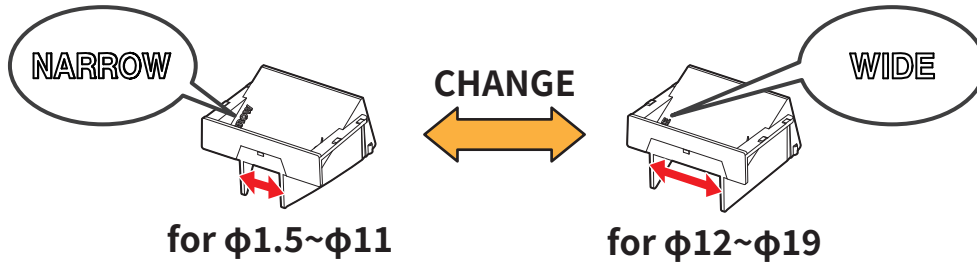
6-3 ID PLATE



6

Change the EXIT GUIDE "WIDE"

※ Be sure to use only for $\phi 12.0 \sim \phi 19.0$ HEAT SHRINK TUBE.



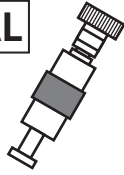
COMPLETE



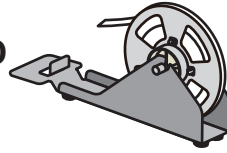
TAPE, MARKING STRIP

0 Standby

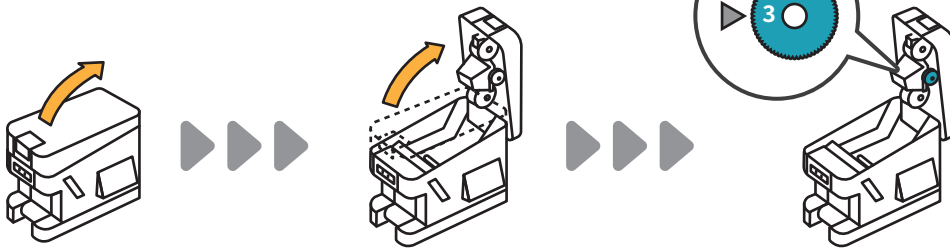
NORMAL



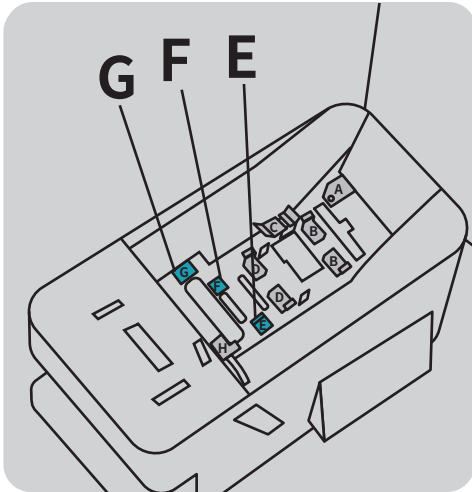
• REEL STAND (P.20)



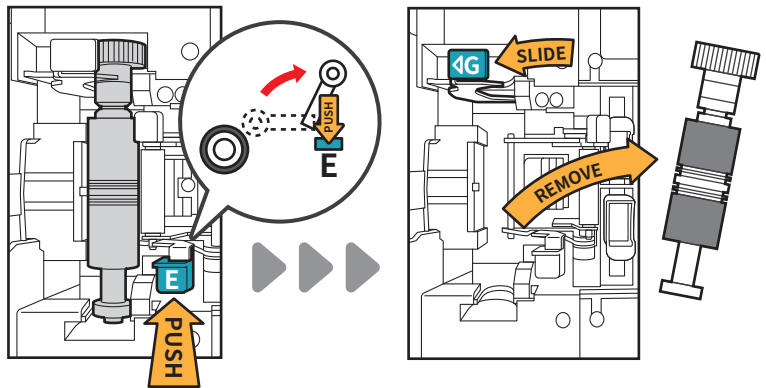
1 Adjusting the printing pressure



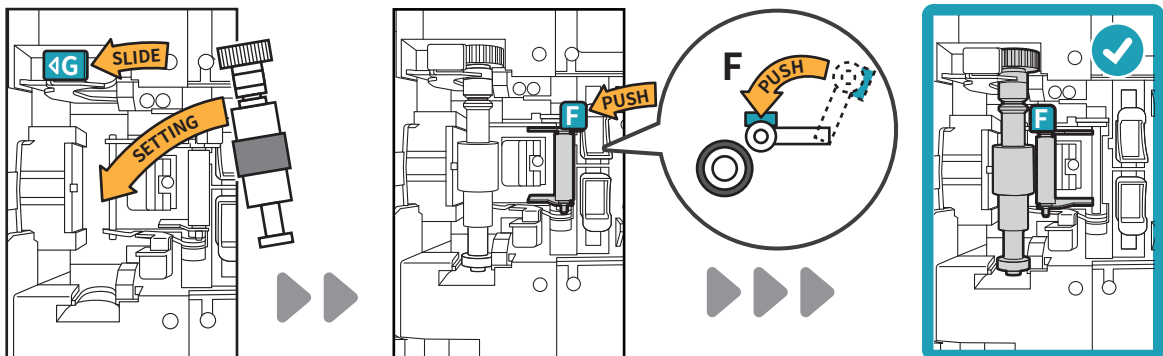
2 Change the platen roller



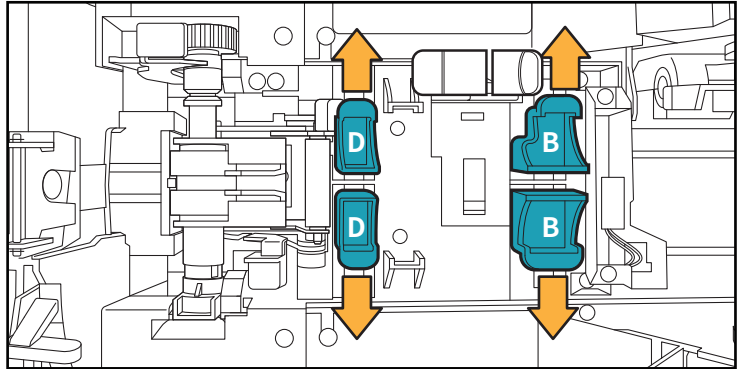
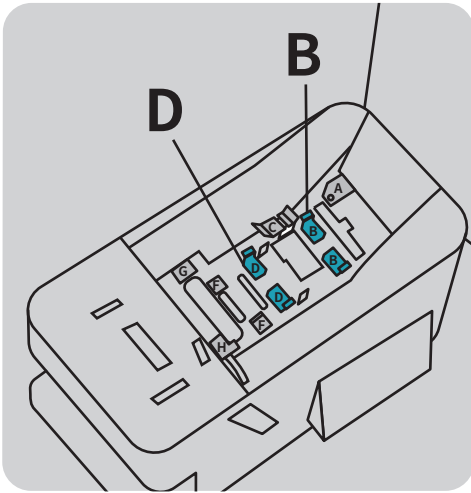
① Remove



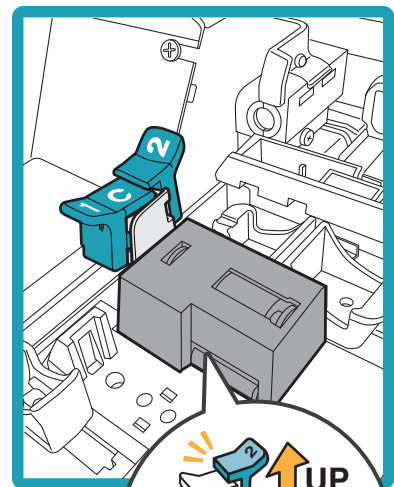
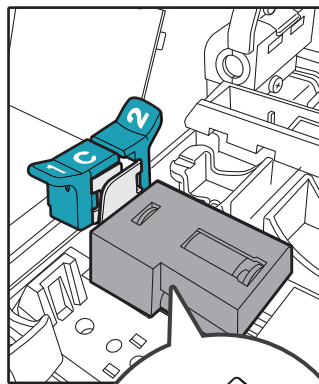
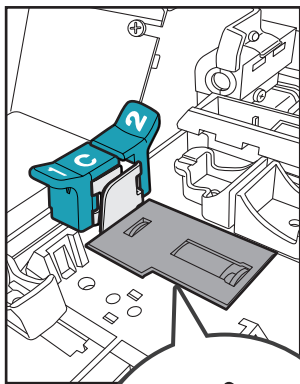
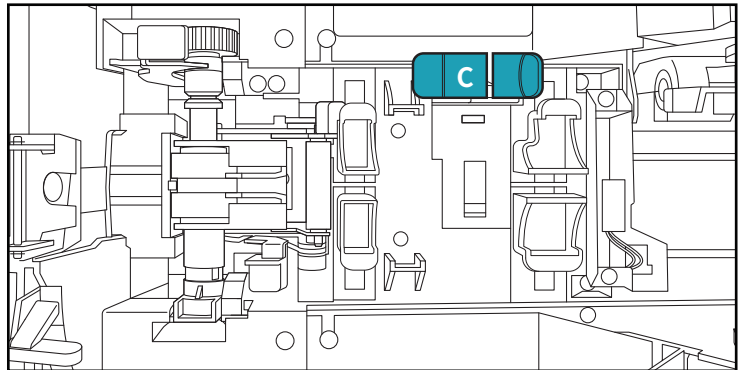
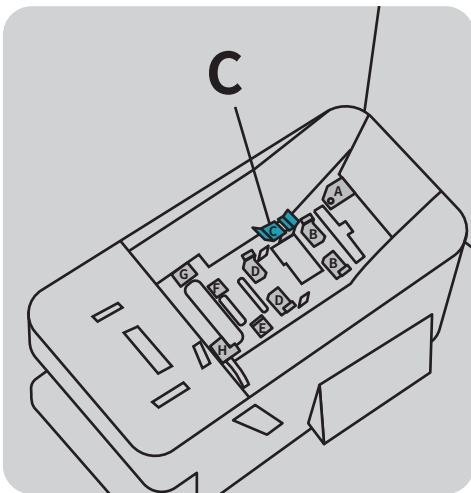
② Setting NORMAL



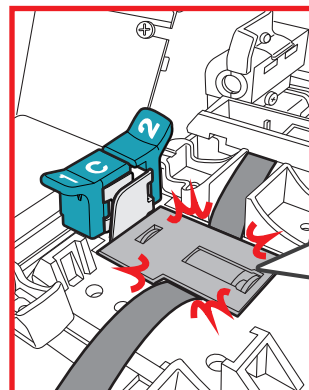
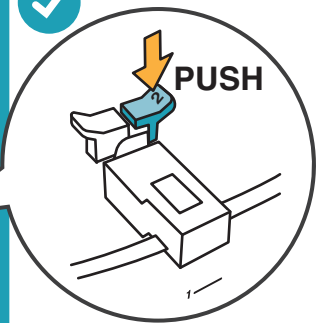
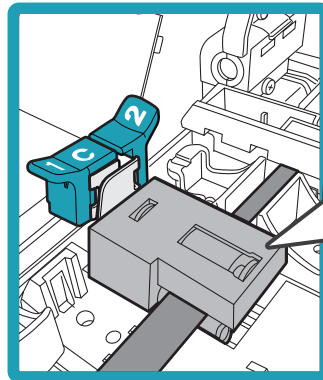
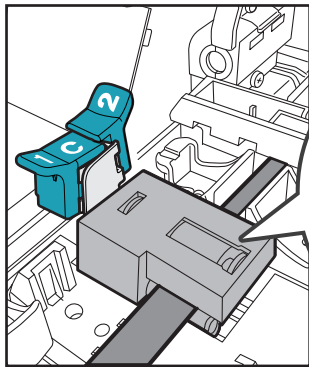
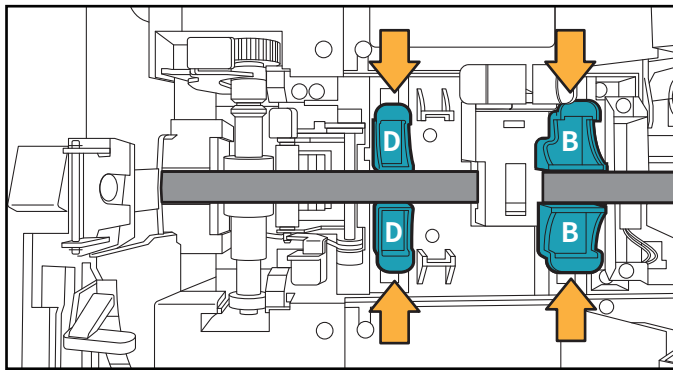
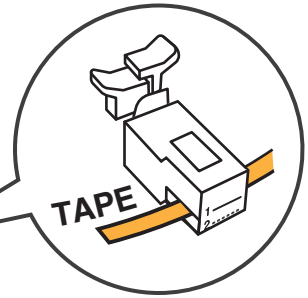
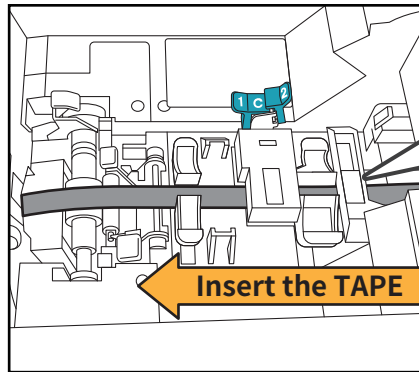
3 Reset the position of levers

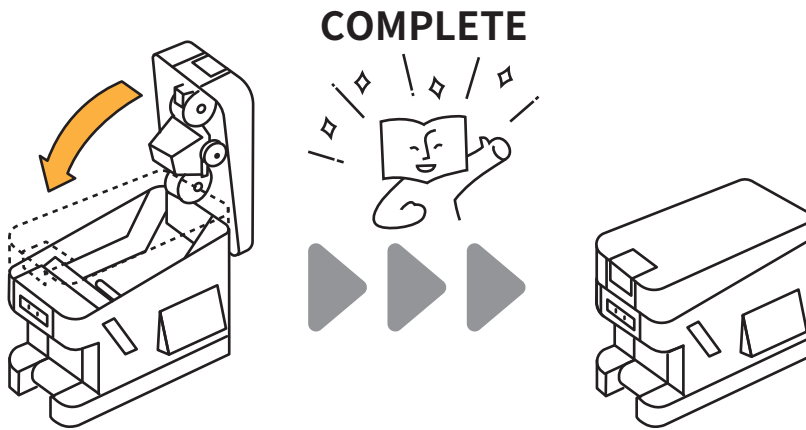
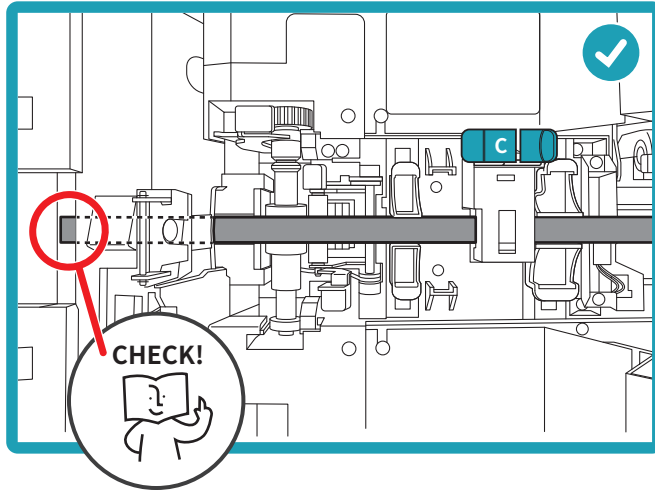


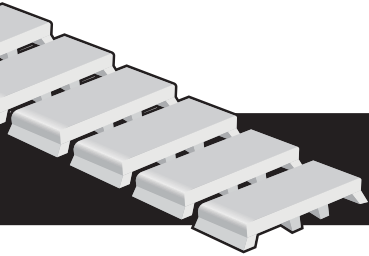
4 Set the length measurement sensor



5 Set the TAPE or MARKING STRIP







BLOCK MARKER

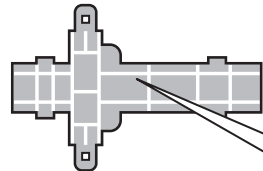
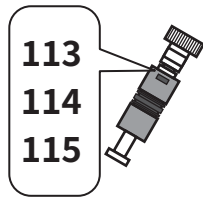
0 Standby

BLOCK MARKER

A 2009-113

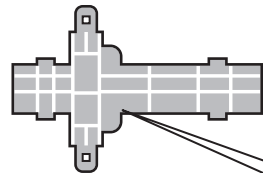
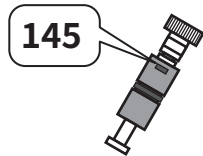
A 2009-114

A 2009-115



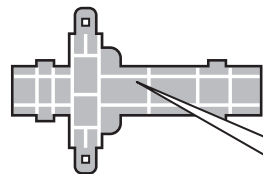
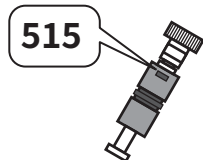
113
114
115
515
615

A 2009-145



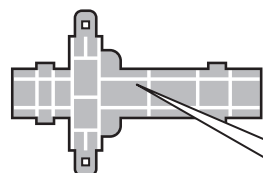
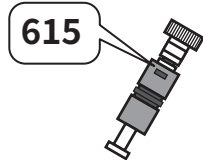
145

A 2009-515



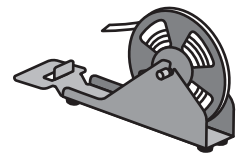
113
114
115
515
615

A 2009-615

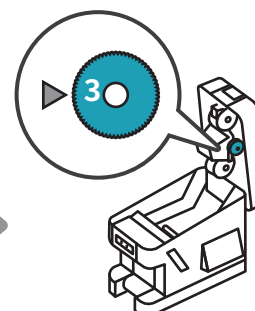


113
114
115
515
615

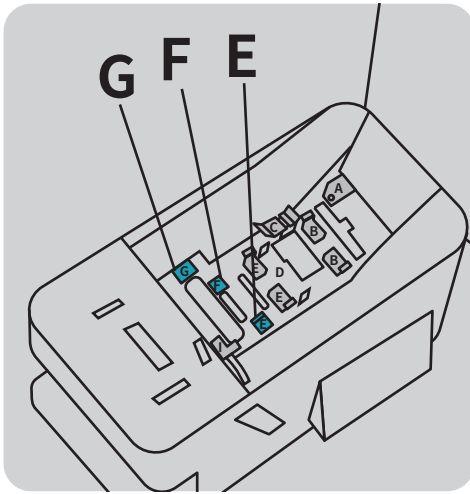
• REEL STAND
(P.20)



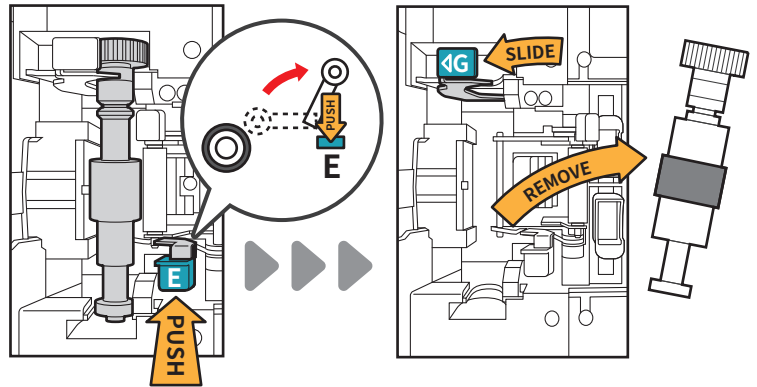
1 Adjusting the printing pressure



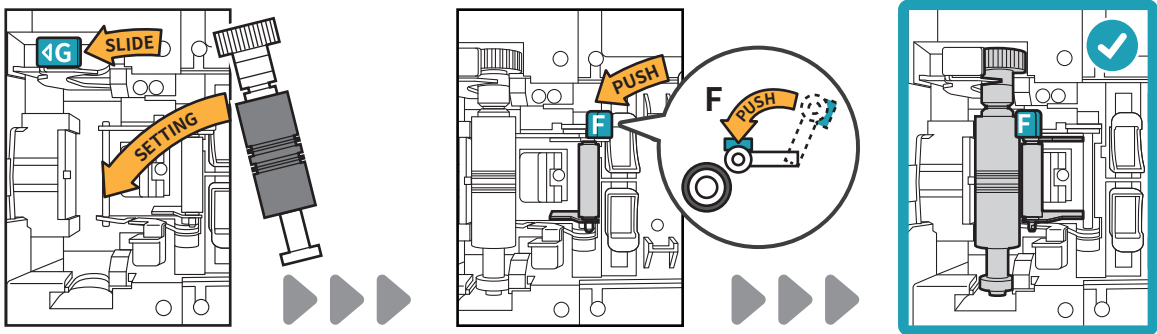
2 Change the platen roller



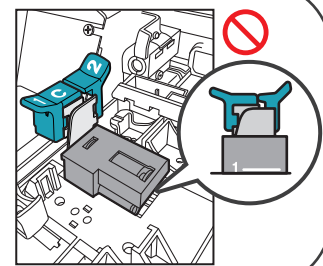
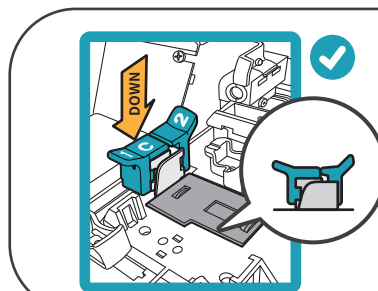
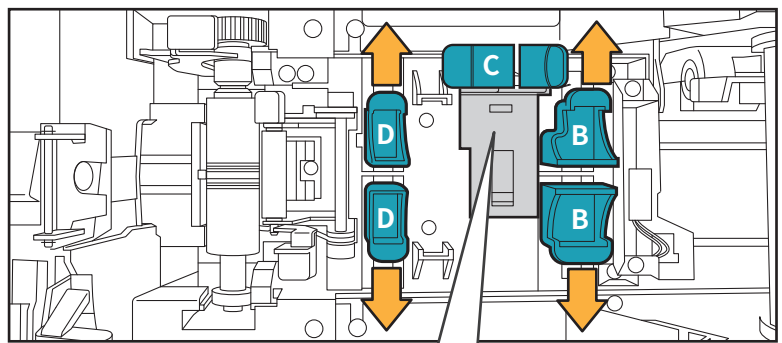
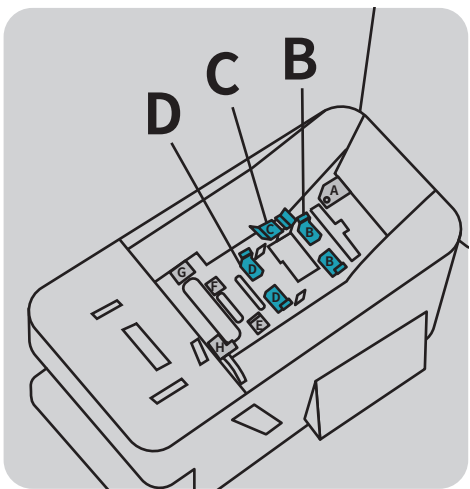
① Remove



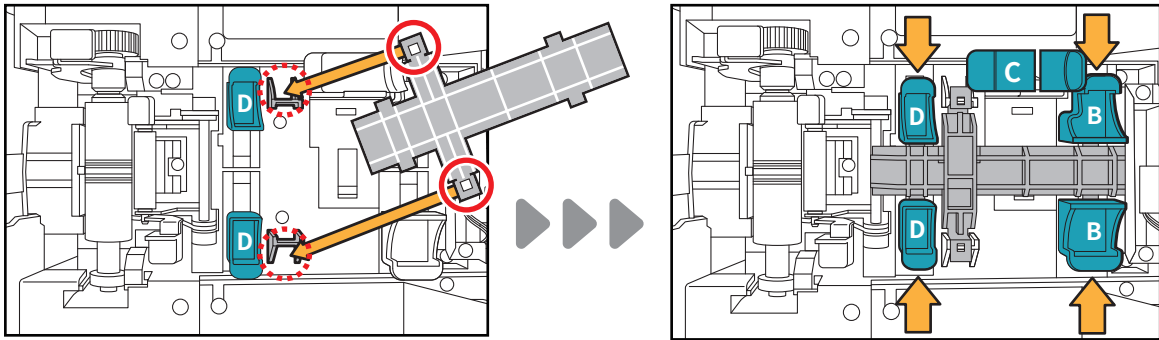
2. Setting the platen roller



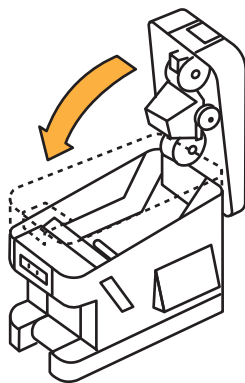
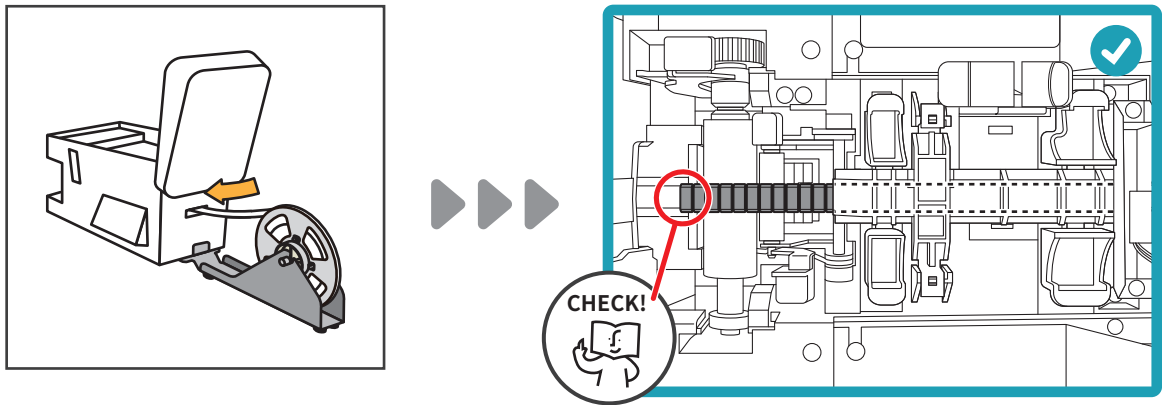
3 Reset the position of levers



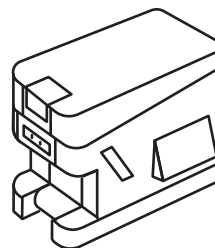
4 Set the attachment



5 Set the BLOCK MARKER

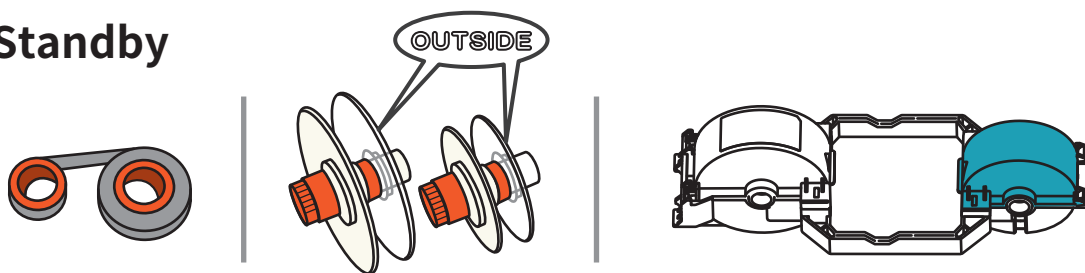


COMPLETE

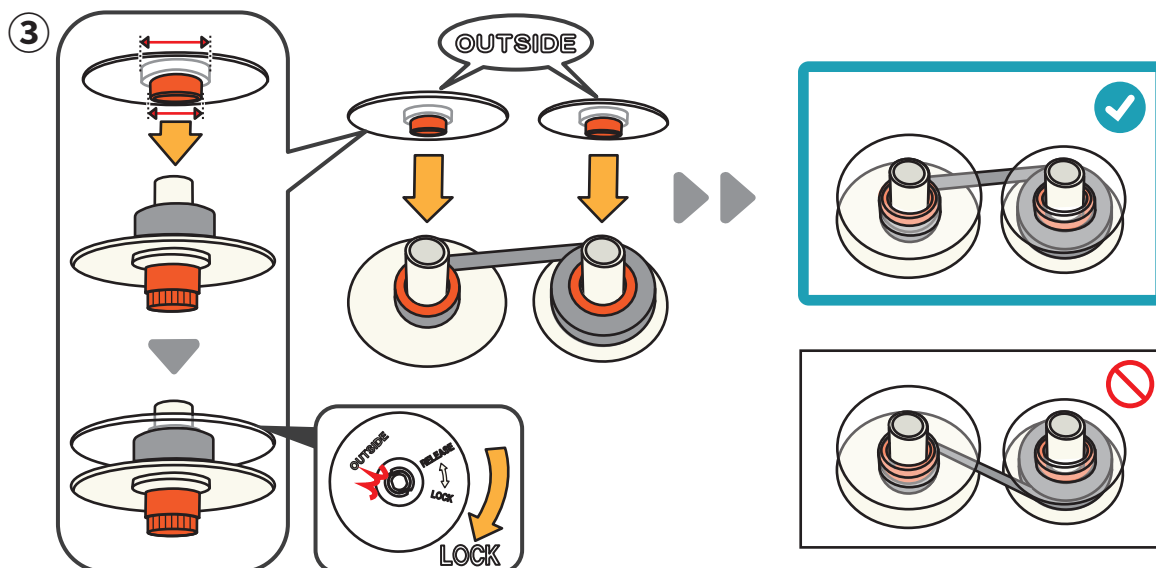
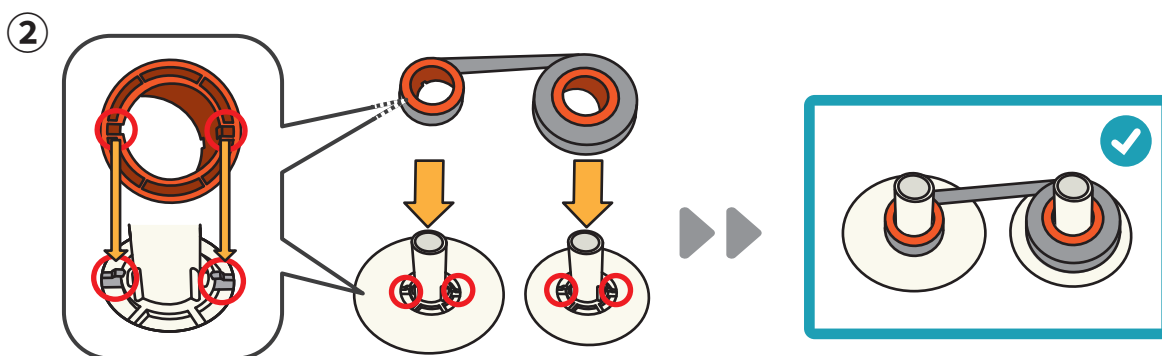
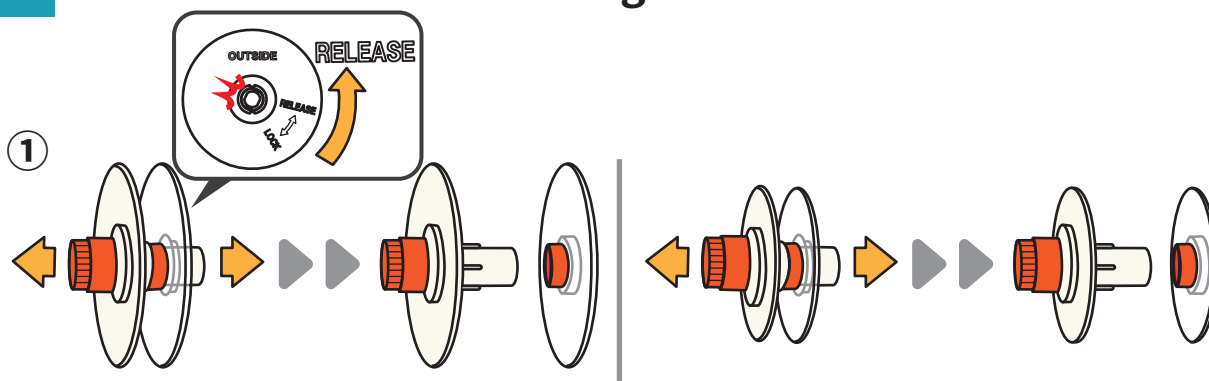


INK RIBBON

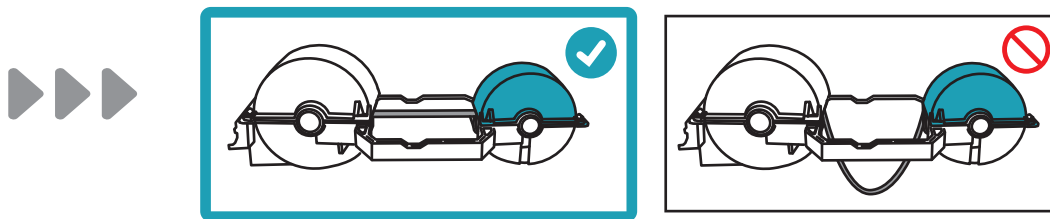
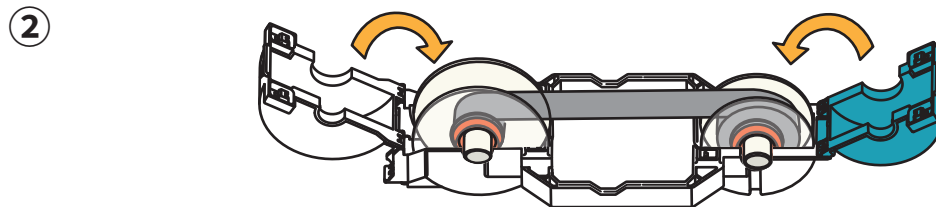
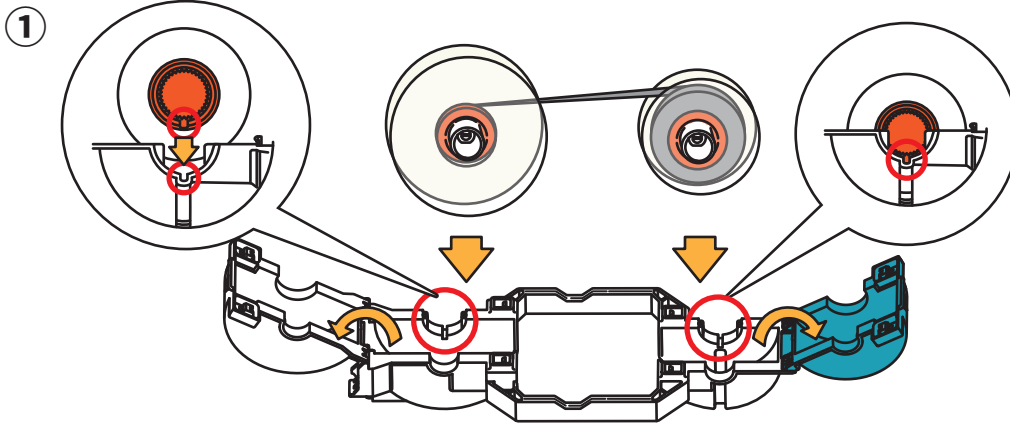
0 Standby



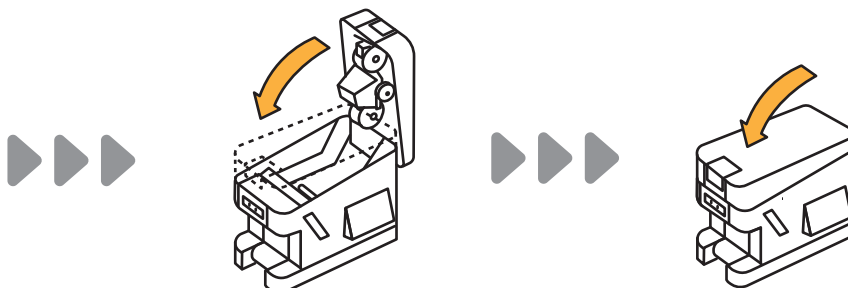
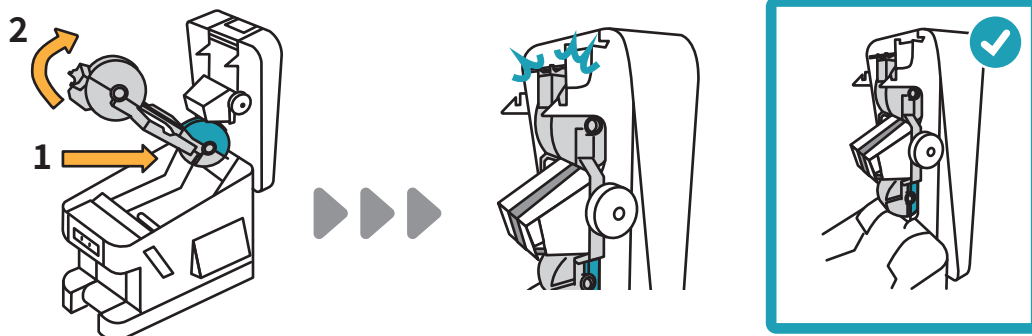
1 Set the ribbon to the flanges.

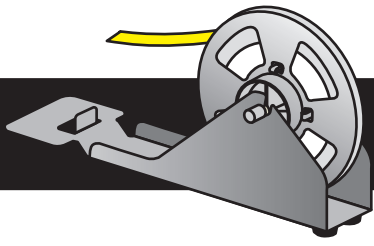


2 Set the ribbon in the ink ribbon cassette.



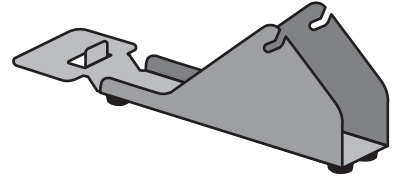
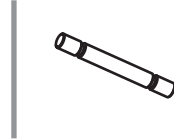
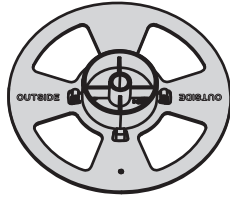
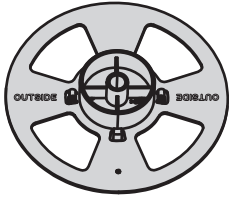
3 Set the ink ribbon cassette on the main body.



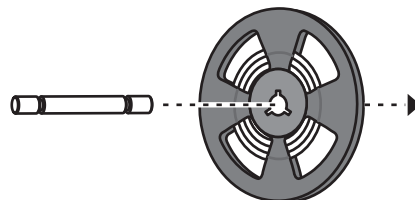
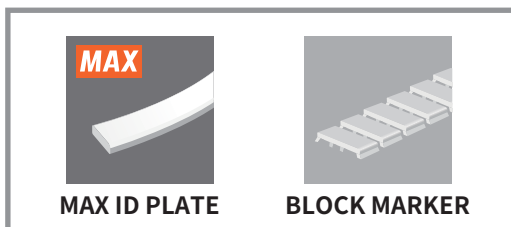
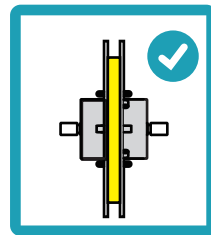
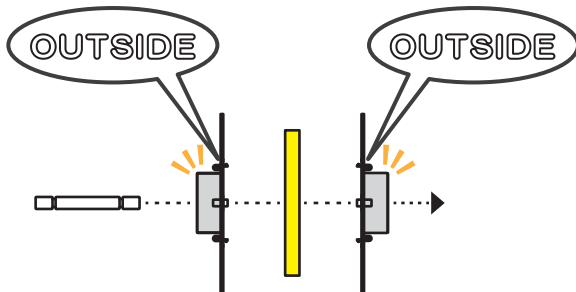
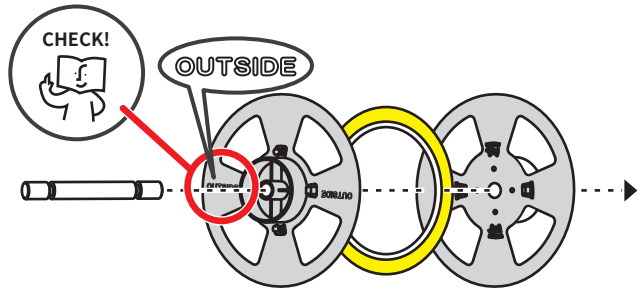
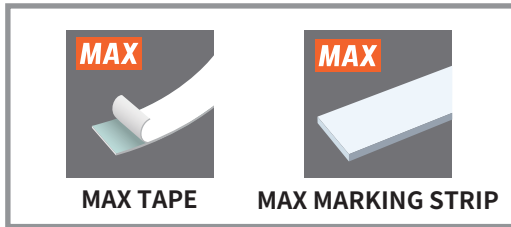


REEL STAND

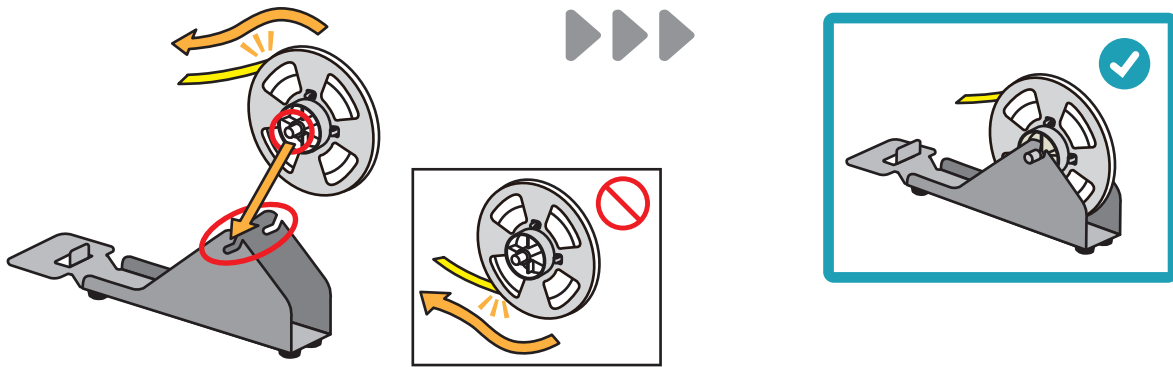
0 Standby



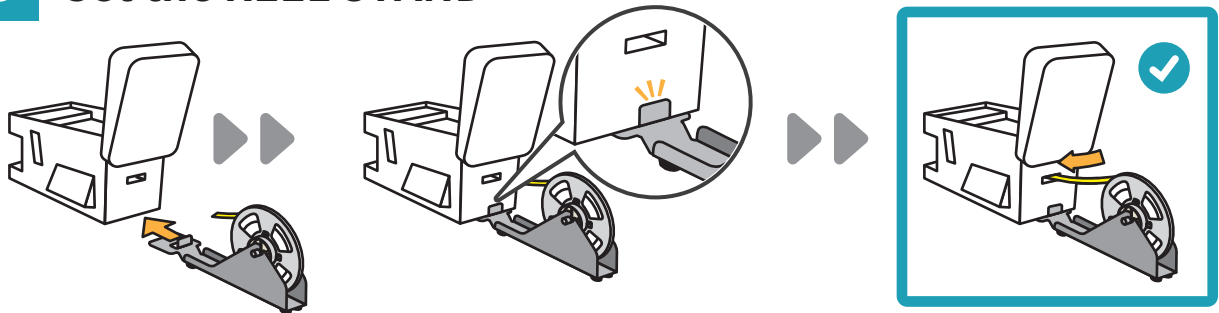
1 Set the consumables.



2 Set the REEL



3 Set the REEL STAND



MAX