

**MAX**

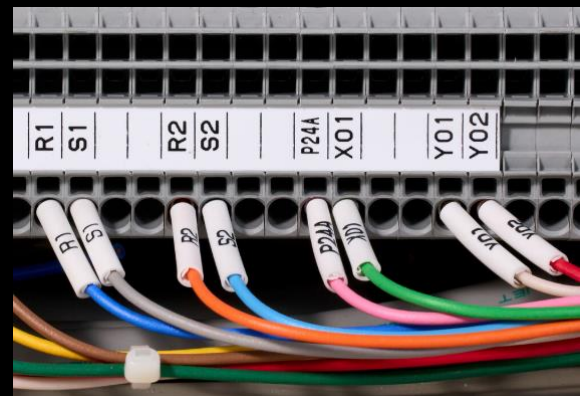
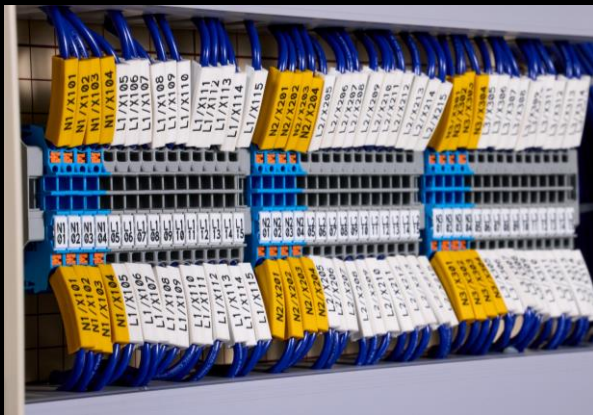
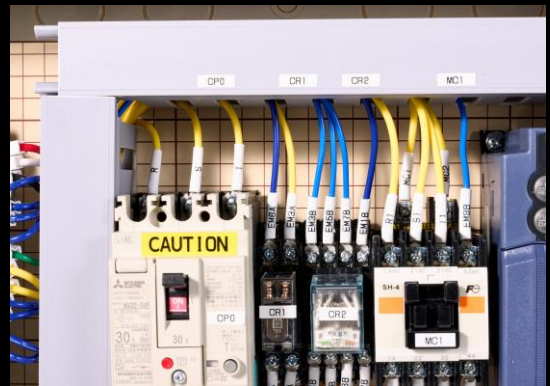


**LETATWIN**

**LM-3000PRO**

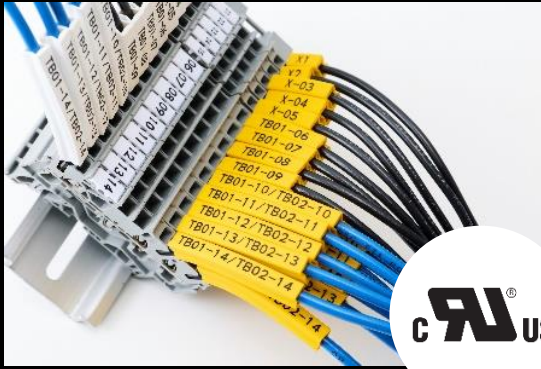
# Consumable Catalog

**GRIPSLEEVE / ID PLATE / POLYESTER TAPE /  
MARKER STRIP / TUBE / INK RIBBON**



# GRIPSLEEVE

Innovative square tube for panel wiring process



The length of the marking block can be adjusted, allowing for easy-to-read printing of characters.

Enhanced visibility by the combination of white tube and yellow tube, even for long text.

UL certified.

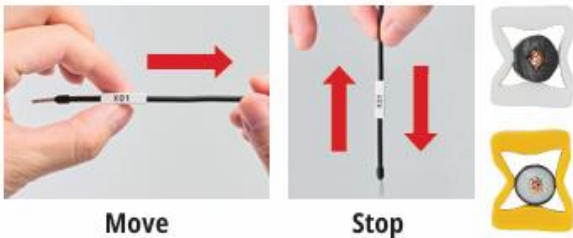


Product Code	Product Name	Remarks
LM90700	LM-SL34W (WHITE)	Wire outer $\phi$ 2.1 to 3.4mm,75m/roll
LM90701	LM-SL34Y (YELLOW)	Wire outer $\phi$ 2.1 to 3.4mm,75m/roll
LM90702	LM-SL37W (WHITE)	Wire outer $\phi$ 3.0 to 3.7mm,75m/roll
LM90703	LM-SL37Y (YELLOW)	Wire outer $\phi$ 3.0 to 3.7mm,75m/roll

The special features of the GRIPSLEEVE can improve your wire-numbering process

## 1 Grip Force

It can be moved along the wire, but it can also stay in place.



## 3 Simple Process

The printed GRIPSLEEVE can slide over wire terminal and stay in place



## 2 Clear Visibility

Larger characters enhance visibility.



## 4 White and Yellow

Choice from two colors of GRIPSLEEVE improves flexibility of wire identification.



Outer Wire	Diameter (mm)	1.5	1.9	2.1	2.2	2.3	2.5	2.8	3	3.1	3.2	3.4	3.7	4	4.1	4.4	5.3
Wire Type	H05V-K/H07V-K			0.5mm <sup>2</sup>	0.75mm <sup>2</sup>		1.0mm <sup>2</sup>	1.5mm <sup>2</sup>				2.5mm <sup>2</sup>		4.0mm <sup>2</sup>			6.0mm <sup>2</sup>
	MTW (AWG)	#24			#22	#22	#20	#18	#16			#14		#12			#10
GRIPSLEEVE	LM-SLxx (S)			(S) *Under development													
	LM-SL34 (M)						LM-SL34(M)										
	LM-SL37 (L)									LM-SL37(L)							
	LM-SLxx (XL)													(XL) *Under development			

# ID PLATE (PLASTIC TAG) -Halogen Free, Polyethylene plate for sleeves

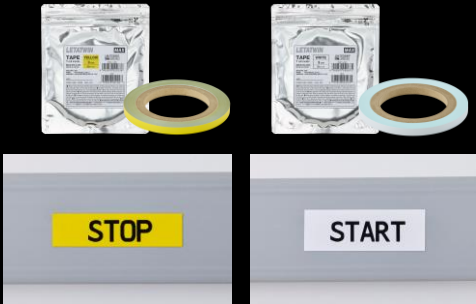


Product Code	Product Name	Remarks
LM90102	LM-ID PLATE4110 (WHITE)	4.1mm(Width)x1.0mm(Thick)x20m/roll

White plate for transparent sleeves, you can print letters on it and half cut with LM-3000PRO.

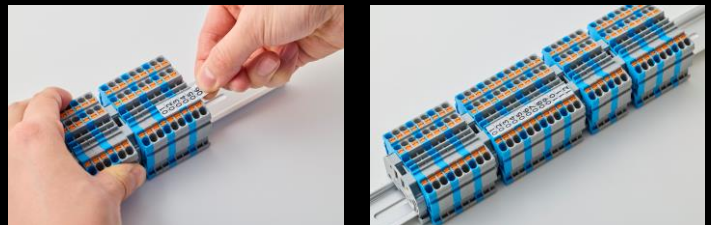
\*Expression of "Halogen Free" is accordance with IEC 61249-2-21, Chlorine(Cl) ≤ 0.09wt%(900ppm), Bromine(Br) ≤ 0.09wt%(900ppm), total content rate of both materials is ≤ 0.15wt%(1500ppm).

# POLYESTER TAPE -For device labeling



Product Code	Product Name	Remarks
LM90190	LM-TP3005W (WHITE)	5mm(Width)x30m/roll
LM90191	LM-TP3005Y (YELLOW)	5mm(Width)x30m/roll
LM90192	LM-TP3009W (WHITE)	9mm(Width)x30m/roll
LM90193	LM-TP3009Y (YELLOW)	9mm(Width)x30m/roll
LM90194	LM-TP3012W (WHITE)	12mm(Width)x30m/roll
LM90195	LM-TP3012Y (YELLOW)	12mm(Width)x30m/roll

# MARKER STRIP -For terminal block marking



Product Code	Product Name	Remarks
LM90245	LM-KM4107 (WHITE)	10.7mm(Width)x0.5mm(Thick)x25m/roll

# L TUBE

-Vinyl(PVC) / Drum roll / Not UL certified



Product Code	Product Name	Remarks
LM90600	LM-TU425L2 (WHITE)	Wire outer $\phi$ 2.5 mm,250m/roll
LM90601	LM-TU427L2 (WHITE)	Wire outer $\phi$ 2.7 mm,250m/roll
LM90602	LM-TU432L2 (WHITE)	Wire outer $\phi$ 3.2 mm,250m/roll
LM90603	LM-TU434L2 (WHITE)	Wire outer $\phi$ 3.4 mm,250m/roll
LM90604	LM-TU436L2 (WHITE)	Wire outer $\phi$ 3.6 mm,250m/roll
LM90082	LM-TU442L (WHITE)	Wire outer $\phi$ 4.2 mm,200m/roll
LM90083	LM-TU452L (WHITE)	Wire outer $\phi$ 5.2 mm,135m/roll
LM90084	LM-TU464L (WHITE)	Wire outer $\phi$ 6.4 mm,100m/roll
LM90085	LM-TU480L (WHITE)	Wire outer $\phi$ 8.0 mm,70m/roll

MAX drum roll type tube is ideal for high quality tube marking. The drum roll box design allows the tube to feed smoothly into the printer, making it possible for workers to print large batches without constantly watching the machine.

# N TUBE

-Vinyl(PVC) / UL224 / E171616 / 105°C / 600V

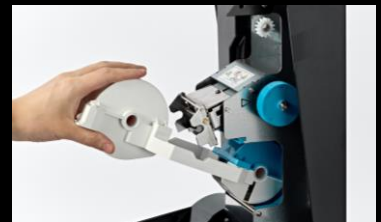
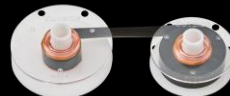


Product Code	Product Name	Remarks
LM90200	LM-TU332N2 (WHITE)	Wire outer $\phi$ 3.2 mm,100m/roll
LM90201	LM-TU336N2 (WHITE)	Wire outer $\phi$ 3.6 mm,100m/roll
LM90202	LM-TU342N2 (WHITE)	Wire outer $\phi$ 4.2 mm,80m/roll
LM90203	LM-TU352N2 (WHITE)	Wire outer $\phi$ 5.2 mm,80m/roll

The N TUBE series has acquired the UL224 certification, and provides high insulation performance for sites with this requirement.

# INK RIBBON

-Only the ribbon core needs to be replaced, allowing the cassette to be reused



Product Code	Product Name	Remarks
LM90143	LM-IR3015B (BLACK)	200m/roll for PVC & heat shrink tube
LM90144	LM-IR3015W (WHITE)	180m/roll for heat shrink tube only
LM90148	LM-RC3015	Ribbon refillable cassette