

**MAX**



# LETATWIN

## LM-3000PRO

WIRE NUMBERING & DEVICE LABELING  
SOLUTION FOR  
CONTROL PANEL ASSEMBLY

# 1 GRIPSLEEVE: DIRECT PRINT SLEEVE

Innovative marking solution for panel wiring process!

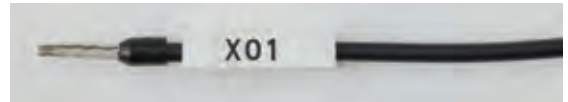
## 1 GRIP SLEEVE WIRE NUMBERING IMAGES;

The length of the marking block can be adjusted, allowing for easy-to-read printing of characters.

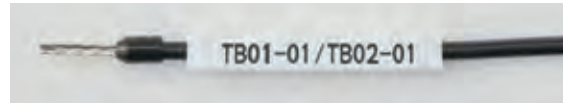


### Numbering Examples:

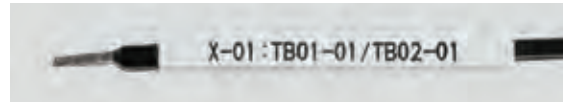
#### 1 Wire Number:



#### 2 Source/Target:



#### 3 Wire Number & Source/Target:



## 2 FEATURES:

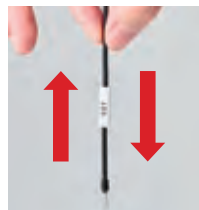
The special features of the GRIP SLEEVE can improve your wire-numbering process..

### 1 Grip Force:

It can be moved along the wire, but it can also stay in place.



Move



Stop



### 3 Simple Process

The printed GRIP SLEEVE can slide over wire terminal and stay in place.



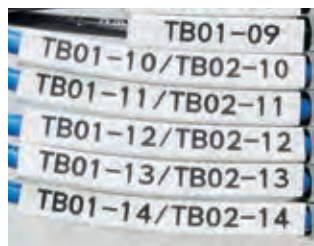
Print



insert

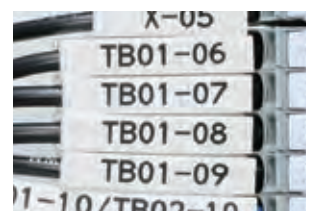
### 2 Clear Visibility:

Larger characters enhance visibility.



### 4 White and Yellow

Choice from two colors of GRIP SLEEVE improves flexibility of wire identification.



### 3 DOUBLE SIDED MARKING:

The double-sided printing feature minimizes rework when the marking block is inserted to the wire incorrectly.



#### Process;

Step 1



Step 2



Step 3



Step 4



Step 5



### 4 SOURCE/TARGET MARKING:

Printing the source and target directly on the marking block makes it easy to confirm correct wiring.

#### Example:



#### Process:

Edit file in Excel using `CONCATENATE`

Device	Wire		Device	Wire	Wire Numbering 1	Wire Numbering 2
TB01-	1	/	TB-02-	1	TB01-1/TB-02-1	TB-02-1/TB01-1
TB01-	2	/	TB-02-	2	TB01-2/TB-02-2	TB-02-2/TB01-2
TB01-	3	/	TB-02-	3	TB01-3/TB-02-3	TB-02-3/TB01-3
TB01-	4	/	TB-02-	4	TB01-4/TB-02-4	TB-02-4/TB01-4
TB01-	5	/	TB-02-	5	TB01-5/TB-02-5	TB-02-5/TB01-5
TB01-	6	/	TB-02-	6	TB01-6/TB-02-6	TB-02-6/TB01-6
TB01-	7	/	TB-02-	7	TB01-7/TB-02-7	TB-02-7/TB01-7

Copy and Paste to PC EDITOR PRO



\*`CONCATENATE` is a feature in Microsoft Excel.

\*Microsoft, Windows, and Excel are trademarks or registered trademarks of Microsoft Corporation in the United States and/or other countries.

		Recommended Size															
Outer Wire	Diameter(mm)	1.5	1.9	2.1	2.2	2.3	2.5	2.8	3.0	3.1	3.2	3.4	3.7	4.0	4.1	4.4	5.3
Wire Type	H05V-K/H07V-K			0.5mm <sup>2</sup>	0.75mm <sup>2</sup>		1.0mm <sup>2</sup>	1.5mm <sup>2</sup>				2.5mm <sup>2</sup>		4.0mm <sup>2</sup>			6.0mm <sup>2</sup>
	MTW(AMG)	#24			#22	#22	#20	#18	#16			#14		#12			#10
GRIP SLEEVE	LM-SLxx(S)	(S) *Under development															
	LM-SL34(M)	LM-SL34(M)															
	LM-SL37(L)	LM-SL37(L)															
	LM-SLxx(XL)	(XL) *Under development															

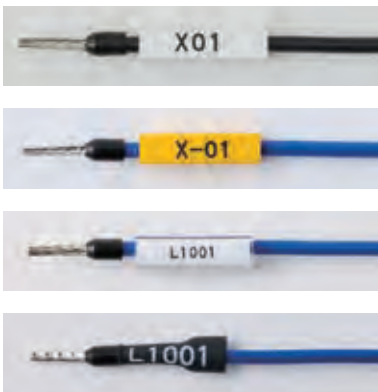
2

## WIDE RANGE OF PRINT CONSUMABLES:

LM-3000PRO can print versatile consumables for control panel.



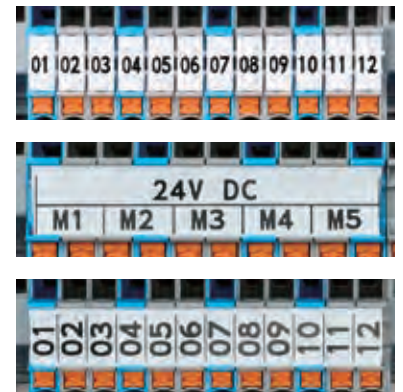
### WIRE



### DEVICE



### TERMINAL BLOCK



3

## BENEFIT OF LONG LENGTH CONSUMABLES:

Half-cut function reduces the need to maintain multiple lengths of printing material in inventory.

### Half cut function:

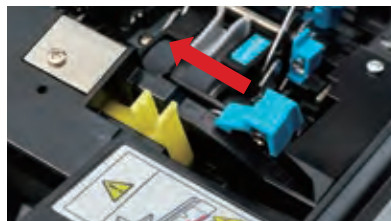
Adjustable half cut depth.



Deeper



Shallower



### GRIP SLEEVE 10-150mm

A1	B02	L1001	TB01-01
10mm	20mm	30mm	40mm

### TAPE 3.5-60mm

A	L101	TB01-01	TB01-01/TB02-01
3.5mm	20mm	30mm	50mm

### HS TUBE/PVC TUBE 10-150mm

A	L101	TB01-01	TB01-01/TB02-01
A	L101	TB01-01	TB01-01/TB02-01
10mm	20mm	30mm	40mm

## 4 CONSUMABLES DETAILS:

LM-3000PRO can print the following materials.

### 1 INK RIBBON



Black:  
200m/roll



White:  
180m/roll

\*Only the ribbon core needs to be replaced, allowing the cassette to be reused.

### 2 BLOCK MARKER

Wago  
2009-  
113/114/115  
145



Wago  
2009-515  
for  
Phoenix



Wago  
2009-615  
for  
Weidmuller



### 3 MARKER STRIP

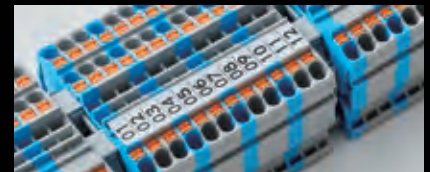
Print



Insert to block



Done

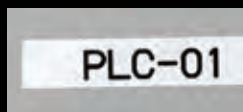


### 4 POLYESTER TAPE

Yellow x 5 9 12 mm



White x 5 9 12 mm



Reel Stand

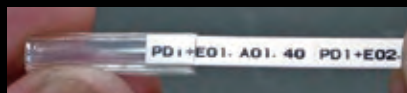


### 5 ID PLATE (PLASTIC TAG)

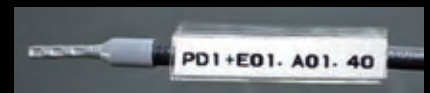
Printed



Insert to sleeve



Done

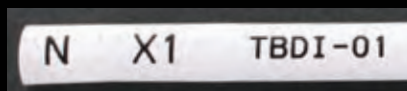


### 6 HEAT SHRINK (HS) TUBE/PVC TUBE

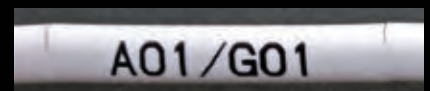
Printed HS TUBE Black



Printed HS TUBE White



GRIP TUBE/PVC NORMAL TUBE



# 5 SOFTWARE:

Simple design and easy-to-use software.

## Operation Process

**1**  
Printer  
Selection



**2**  
Consumable  
Settings



**3**  
Print  
Settings



**4**  
Print data  
input(direct)



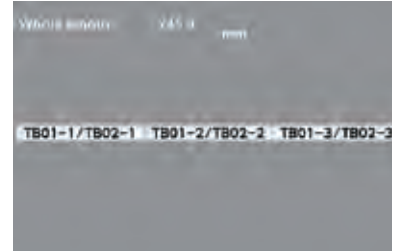
OR

**5**  
Print data  
input  
(copy&paste)

TB01-01/TB02-01	LM3PC2
TB01-02/TB02-02	
TB01-03/TB02-03	
TB01-04/TB02-04	
TB01-05/TB02-05	
TB01-06/TB02-06	
TB01-07/TB02-07	

Microsoft Excel PC EDITOR PRO

**6**  
Preview  
check



**7**  
Material  
setting



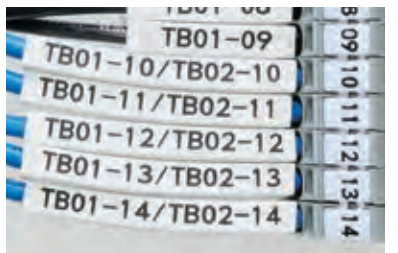
**8**  
Print



**9**  
Apply

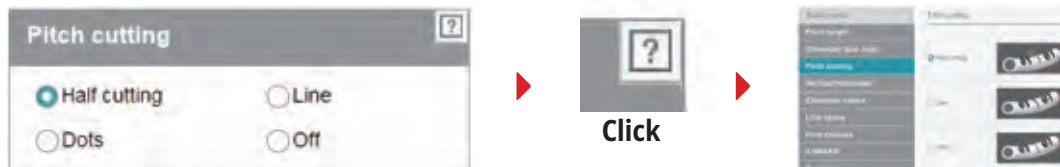


**10**  
Marking  
example

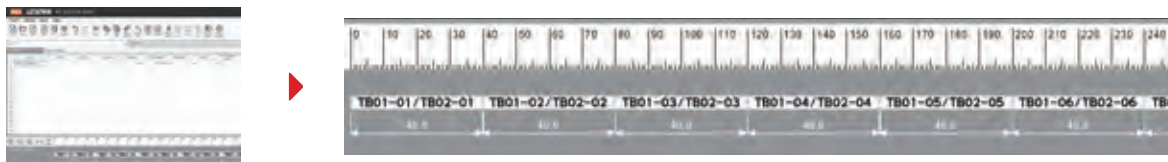


## Useful features:

**Guidance:** Click Question mark, a detailed explanation will be displayed.



**Individual Preview:** Previews are available for each marking blocks.



**Table mode:** This mode is available when you set marker strip.



Set Table mode `On`.

## Detailed settings for control panel marking:

### Font choices



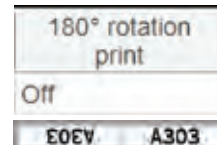
### Zero slash



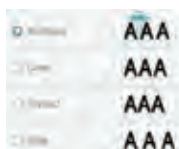
### Vertical/Horizontal



### 180° rotation



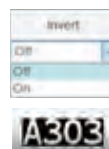
### Character Space



### Flame/Underline



### Invert



### Pitch length



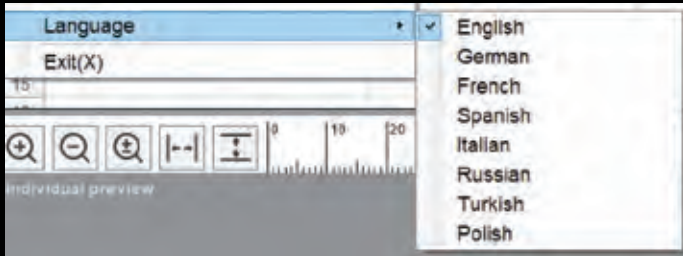
# 6

## PRINTER BASIC FUNCTIONS:

This printer has the functionality for panel building.

### European Languages:

English/German/French/Spanish/Italian/Russian/Turkish/Polish.



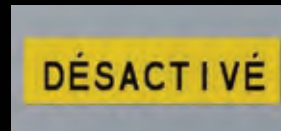
German



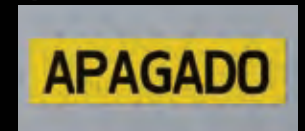
Italian



French



Spanish



### Half cut function:

Half-cut function reduces the need to maintain multiple lengths of printing material in inventory.

Half cutter unit



Replaceable



Depth adjustable



Half cut block



Insert to wire



### Refillable ink ribbon:

Only the ribbon core needs to be replaced, allowing the cassette to be reused.

Black and white



Set ribbon to guide core



Check the rib fit to hole



Set cassette to printer



Set guide core to cassette



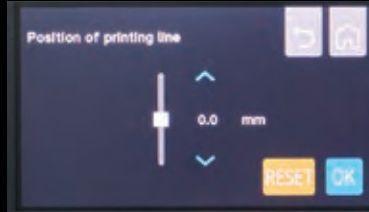
Set guide core to cassette



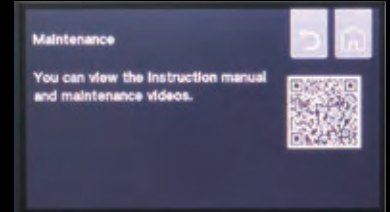
## LCD colourful touch panel:



Colourful



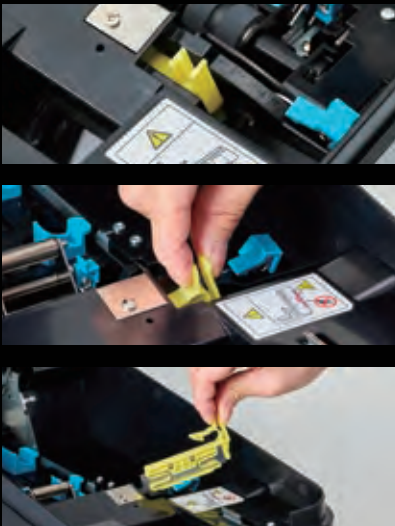
QR code for instruction



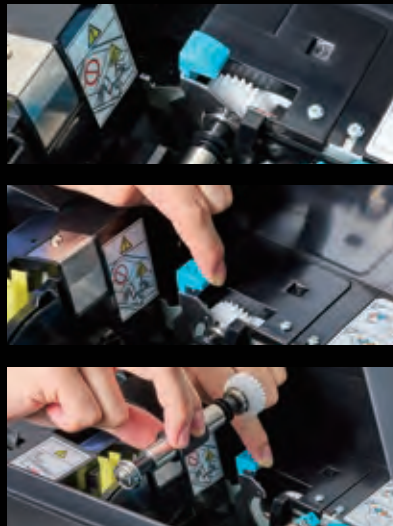
\*"QR Code" is a trademark or registered trademark of DENSO WAVE INCORPORATED in Japan and other countries.

## Replaceable parts:

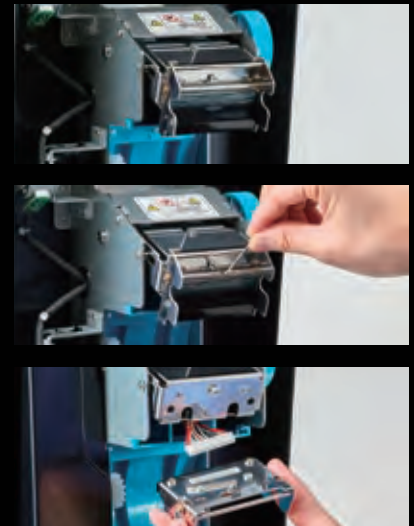
### 1 Half cutter



### 2 Platen roller



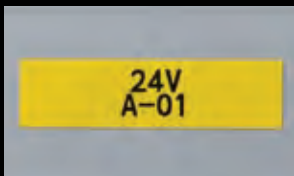
### 3 Thermal head



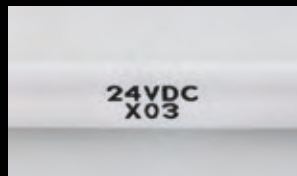
## 300dpi Thermal head:

Small characters can be printed clearly.

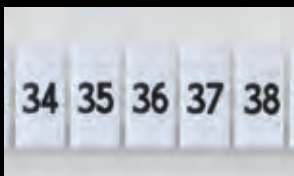
TAPE 2 lines



GRIP SLEEVE 2 lines



BLOCK MARKER



MARKER STRIP 2 lines



## Print speed:

80mm/sec and 52 blocks/min  
(20mm marking block with half cut)



# 7 SPECIALIZED FEATURES:

LM-3000PRO is easy to use in panel manufacturing sites.

## QUICK REFERENCE manual:

This manual comes with machine will help you install the consumables.



## Website and Video:

You can watch videos that show how to set it up and operate it.

EU SITE

MAX EUROPE SITE



GLOBAL SITE

Landing Page



Operational Video



\*The above web page is a temporary page design image and is not the final page design and is subject to change.

## Design software for multiple printers:

You can create print files for both portable and desktop printers using the same design software.

Choose model



Input print data



Print



\*Depending on the consumables you select, the same print file may not be printable on a portable printer LM-550A series.

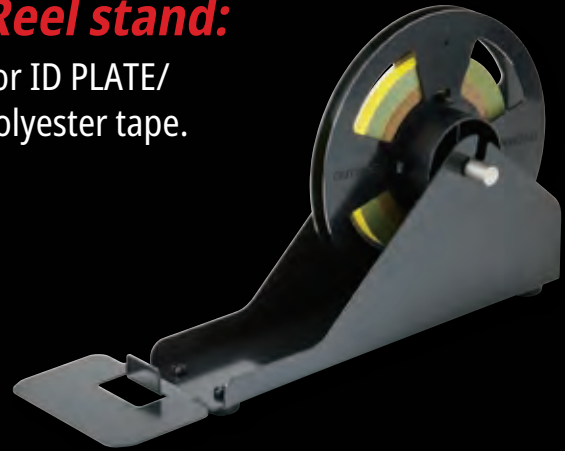
### **Multiple interface:**

USB flash memory/  
LAN cable/  
USB cable(Type A-B)/  
Wifi



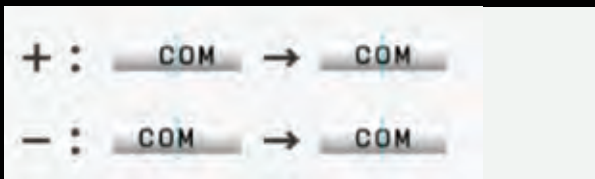
### **Reel stand:**

For ID PLATE/  
Polyester tape.



### **Adjustment function:**

Cutting position adjustment.

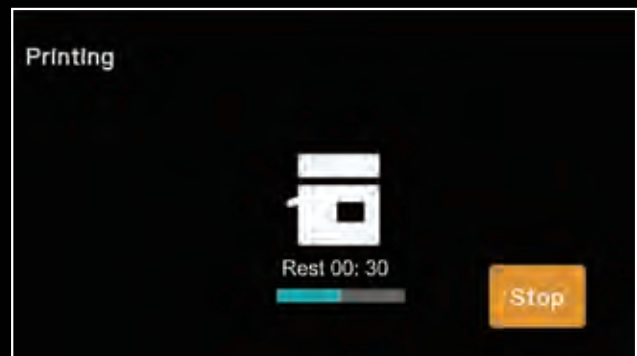


Print position adjustment.



### **Remaining print length:**

You can check the remaining time until  
printing is complete.



### **Jam removal:**

You can open the door to remove any  
jammed items.



### **Manual full cut:**

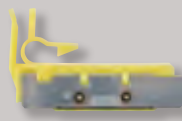
You can perform a full cut manually after  
printing is complete.



Ribbon cassette



Half cutter



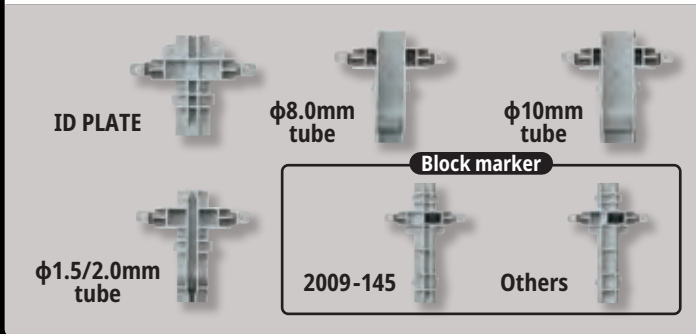
Thermal head



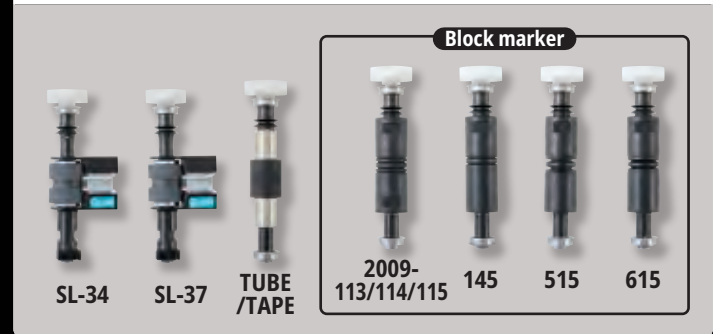
Reel Stand



Attachement



Platen roller



## SPECIFICATIONS

ITEMS	CONTENTS
Name	LM-3000PRO
Product type	Tube marker
Dimensions	Approx.427(W)x256(D)x301(H)mm
Weight	Approx. 11kg(Excluding accessories and power cord)
Printing Method	Thermal transfer method(300dpi)
Display	4.3 inch Colourful touch panel(back light)
Print speed(tube print)	80mm/sec(Standard),50mm/sec(Low temperature mode) 80blocks(20mm pitch/LM-TU432N2/Half cut/Standard Temp)
Maximum print length	GRIP SLEEVE 100m/Tube 100m/Tape 5m/Marker Plate 5m/ ID Plate 20m/Block Marker 1000pc (Copy print:Tape 10m/Maker strip 10m)
Character size	1.3/2.0/2.4/3.0/4.0/6.0mm(height)
Tube size	$\phi 1.5$ to $\phi 10.0\text{mm}$ (PVC tube) $\phi 2.0$ to $\phi 19.0\text{mm}$ (Heat shrink tube)
Tape size	Width 5/9/12mm, White and Yellow(MAX genuine tapes)
ID plate size	Width 4.1mm(MAX LM-ID PLATE4110)
Terminal Block marker	WAGO products 2009-113/114/115/145/515/615
Marker strip	Width 5.5mm to 12.0mm
Ink ribbon(refillable)	Black 200m/roll(PVC&Heat Shrink), White 180m/roll(Heat shrink)
Tube cutting method	Auto half cut/Manual full cut
Main unit memory	None
External memory	USB flash memory
Interface	Wifi/USB-A(USB flash memory)/USB-B(2.0 full speed)/LAN
Wireless LAN	IEEE802.11.b/g/n, n is 2.4GHz only, Station mode only, WPA-TKIP, 128-bit WPA2 CCMP(AES)
Tube heater	Built in
Power supply	Input AC100 to 240V 50/60Hz,
Power consumption	Max 70W,(15W stand by/10W hibernation)
Operating environment(tube print)	10°C to 35°C(without tube heater operation)
Storage environment(machine)	Temp -20°C to 60°C, Humidity 20% to 80% no condensation
Supported OS(in March 2026)	Windows 11

## CONSUMABLES &amp; OTHER ITEMS

Category	Product	Remarks
Machine	LM-3000PRO	Printer with half and full cut function
Ink ribbon	LM-IR3015B(BLACK)	200m/roll for PVC & heat shrink tube
	LM-IR3015W(WHITE)	180m/roll for heat shrink tube only
Ink ribbon cassette	LM-RC3015	Ribbon refillable cassette
GRIP SLEEVE	LM-SL34W(WHITE)	Wire outer $\phi 2.1$ to 3.4mm,75m/roll
*UL224 certified	LM-SL34Y(YELLOW)	Wire outer $\phi 2.1$ to 3.4mm,75m/roll
(Drum roll type)	LM-SL37W(WHITE)	Wire outer $\phi 3.0$ to 3.7mm,75m/roll
	LM-SL37Y(YELLOW)	Wire outer $\phi 3.0$ to 3.7mm,75m/roll
	LM-TU29G(WHITE)	Wire outer $\phi 1.9$ to 2.1mm,100m/roll
	LM-TU37G(WHITE)	Wire outer $\phi 2.5$ to 2.7mm,100m/roll
	LM-TU46G(WHITE)	Wire outer $\phi 3.0$ to 3.7mm,100m/roll
	LM-TU425L2(WHITE)	Wire outer $\phi 2.5$ mm,250m/roll
	LM-TU427L2(WHITE)	Wire outer $\phi 2.7$ mm,250m/roll
PVC Tube	LM-TU432L2(WHITE)	Wire outer $\phi 3.2$ mm,250m/roll
(Drum roll type)	LM-TU434L2(WHITE)	Wire outer $\phi 3.4$ mm,250m/roll
	LM-TU436L2(WHITE)	Wire outer $\phi 3.6$ mm,250m/roll
	LM-TU442L(WHITE)	Wire outer $\phi 4.2$ mm,200m/roll
	LM-TU452L(WHITE)	Wire outer $\phi 5.2$ mm,135m/roll
	LM-TU464L(WHITE)	Wire outer $\phi 6.4$ mm,100m/roll
	LM-TU480L(WHITE)	Wire outer $\phi 8.0$ mm,70m/roll
PVC Tube	LM-TU332N2(WHITE)	Wire outer $\phi 3.2$ mm,100m/roll
*UL224 certified	LM-TU336N2(WHITE)	Wire outer $\phi 3.6$ mm,100m/roll
(Hank winding)	LM-TU342N2(WHITE)	Wire outer $\phi 4.2$ mm,80m/roll
	LM-TU352N2(WHITE)	Wire outer $\phi 5.2$ mm,80m/roll
	LM-TP3005W(WHITE)	5mm(Width)x30m/roll
	LM-TP3005Y(YELLOW)	5mm(Width)x30m/roll
Polyester tape	LM-TP3009W(WHITE)	9mm(Width)x30m/roll
	LM-TP3009Y(YELLOW)	9mm(Width)x30m/roll
	LM-TP3012W(WHITE)	12mm(Width)x30m/roll
	LM-TP3012Y(YELLOW)	12mm(Width)x30m/roll
Marker strip	LM-KM485(WHITE)	8.5mm(Width)x0.5mm(Thick)x25m/roll
	LM-KM495(WHITE)	9.5mm(Width)x0.5mm(Thick)x25m/roll
	LM-KM410(WHITE)	10.0mm(Width)x0.5mm(Thick)x25m/roll
	LM-KM4107(WHITE)	10.7mm(Width)x0.5mm(Thick)x25m/roll
ID plate	LM-ID PLATE4110(WHITE)	4.1mm(Width)x1.0mm(Thick)x20m/roll
Half cutter	LM-HC3000	(LM-3000PRO only)
	LM-PR SL34	For GRIP SLEEVE LM-SL34 series
	LM-PR SL37	For GRIP SLEEVE LM-SL37 series
	LM-PR NORMAL	For tube/tape/marker strip
Platen roller	LM-PR115	For WAGO A2009-113/114/115
	LM-PR145	For WAGO A2009-145
	LM-PR515	For WAGO A2009-515
	LM-PR615	For WAGO A2009-615
Thermal head	LM-3000PRO thermal head	User replaceable
	No.1	For $\phi 1.5$ to 2.0mm tubes
	No.2	For $\phi 8.0\text{mm}$ tube
Attachment	No.3	For $\phi 10.0\text{mm}$ tube
(Stabilizer)	No.4	For block markers(113/114/115/515/615)
	No.5	For block marker(145)
	No.6	For ID plate(LM-ID PLATE4110)
Reel stand	Reel stand(with flanges)	For tape/ID plate
Ribbon flange	Ink ribbon flange	For $\phi 8.0$ to $\phi 10.0\text{mm}$ tubes

\*Microsoft, Windows, and Excel are trademarks or registered trademarks of Microsoft Corporation in the United States and/or other countries.

## MAX EUROPE BV

Antennestraat 45, 1322AH, Almere, The Netherlands

PHONE : +31-36-546-9669

FAX : +31-36-536-3985

Web : <https://www.max-europe.com/>



Distributor.