



*ENGINEERED FOR
PERFORMANCE*

MAX CO., LTD. COMPANY DATA

Company Overview

As of October 1, 2024

Company name	MAX CO., LTD.
Foundation date	November 26, 1942
Shared capital	12,367 million yen
Consolidated number of employees	2,457 (as of March 31, 2024)
Fiscal year-end	March 31 (once a year)
Stock exchange registration	Tokyo Stock Exchange (Prime)
Stock code	6454
Main businesses	Office Equipment Business Industrial Equipment Business HCR Equipment Business

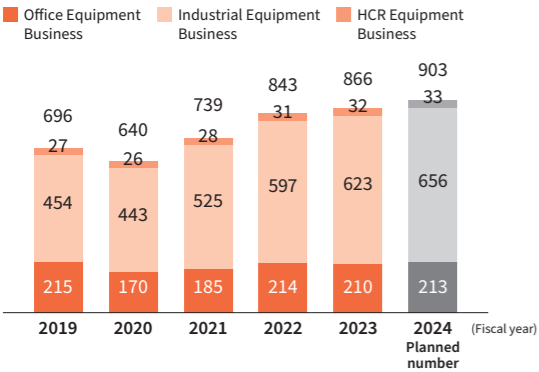
Board members	President	Tatsushi Ogawa
	Senior Managing Director, Senior Executive Officer	Yoshihiro Kaku
	Managing Director and Senior Executive Officer	Masahito Yamamoto
	Director, Executive Officer	Hideyuki Ishii
	Director, Executive Officer	Koji Kato
	Outside Director	Kako Kurasawa
	Director *	Tomohiko Nakamura
	Outside Director *	Asaka Kanda
	Outside Director *	Shoji Kiuchi
	Outside Director *	Mari Yajima

Executive Officers	Senior Executive Officer	Takashi Iwamoto
	Senior Executive Officer	Katsunori Manabe
	Executive Officer	Daisuke Yasue
	Executive Officer	Shintaro Yoshida
	Executive Officer	Akio Kitaya
	Executive Officer	Hitoshi Igarashi
	Executive Officer	Hideo Kashihara
	Executive Officer	Mitsugu Takezaki
	Executive Officer	Makoto Hisatomi
	Executive Officer	Nobuo Suda

* Audit and Supervisory Committee Member

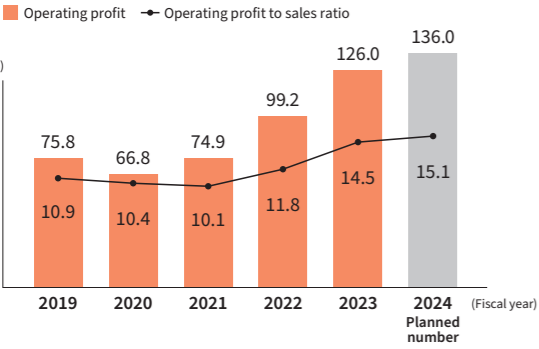
Sales of each business

[Unit : 100 million yen]



Operating profit/
Operating profit to sales ratio

[Unit : 100 million yen]



History

- 1942** Our company was founded as “Yamada Air Industry Co., Ltd.” in Takasaki City, Gunma Prefecture. At that time, it manufactured wing parts for airplanes.
- 1945** Our company’s name was changed to “Yamada Industry Co., Ltd.,” and it created the foundation of today’s MAX by starting the manufacturing of office equipment.
- 1949** Smart Manufacturing & Sales Co., Ltd. was established as our sales company in order to establish our sales system. (Its name was changed to MAX Manufacturing & Sales Co., Ltd. in 1954)
- 1955** Yamada Industry Co, Ltd. was renamed to MAX Industry Co., Ltd.
- 1963** We made a capital, technical and sales alliance with Bostitch Inc. in the USA (which later went under the umbrella of Textron Inc. in 1965)
- 1964** MAX Industry Co., Ltd. and MAX Manufacturing & Sales Co., Ltd. were merged, and became MAX Co., Ltd. This formed an integrated system from manufacturing to sales.
- 1970** We became listed on Tokyo Stock Exchange.
- 1973** Investment ratio in Textron, with which we had made a capital, technical and sales alliance, became 50%.
- 1981** Our Head Office was relocated to Nihonbashi Hakozaki-cho, Chuo-ku, Tokyo.
- 1988** Tamamura Factory, which was built as the main factory for manufacturing drafting equipment, was established and started its operation.
- 1990** MAX FASTENERS(M) SDN. BHD. was established in Malaysia.
- 1991** New factory specialized in manufacturing pneumatic nailers was established on the site of Tamamura Factory and started its operation.
- 1993** We dissolved the capital, technical and sales alliance with Stanley Works Inc. in USA (which had acquired Bostitch Division from Textron in 1986). We established MAX USA Corp., a sales company in USA, and started our own global strategy.
- 1997** Fujioka Factory was redeveloped.
- 2000** Acquired 2 companies of SHINWA HI-TEC group, which makes heater-ventilator-dryers for bathrooms, and entered into the housing environment equipment business.
- 2003** MAX ELECTRONICS MACHINE CO., (SHENZHEN) LTD. was established in China to manufacture electronic office equipment.
- 2005** MAX (THAILAND) CO., LTD. was established in Thailand to manufacture pneumatic nailers.
- 2006** MAX EUROPE B.V. was established in the Netherlands as our sales company.
- 2007** Yoshii Factory, which was built as the main factory for manufacturing home environment equipment, was established and started its operation.
- 2010** We acquired shares of Kawamura Cycle Co., Ltd., which was a manufacturer of wheelchairs, and turned it into a consolidated subsidiary. MAX ELECTRONICS MACHINE (SUZHOU) CO., LTD., was established in China for manufacturing heater-ventilator-dryers for bathrooms.
- 2022** MAX ASIA PTE. LTD. was established in Singapore as our sales company.
- 2023** MAX (SHANGHAI) CO., LTD. was established in China as our sales company.
- 2011** New building was built in the site of Tamamura Factory, and our Research & Development Division was relocated to this building from Takasaki.
- 2013** Eastern Seaboard Factory was established in Thailand to manufacture office equipment and started its operation.
- 2014** We acquired all the shares of Lighthouse (UK) Holdco., Ltd., which had been our European agency for selling “Bepop,” our sign creator.
- 2017** Our domestic sales subsidiaries were integrated and renamed as MAX Sales Co., Ltd.
- 2018** New factory was established on the site of the Thailand Factory to manufacture “TIEWIRE,” our expendable for concrete rebar tying tool.
- 2019** Lighthouse Europe B.V. was established in the Netherlands as a sales office of “Bepop,” our sign creator.
- 2022** MAX EUROPE B.V. GERMAN OFFICE was established in Germany as our sales base.
- 2023** The factory specialized in "TIEWIRE" was expanded within the Thailand Factory and started operation.

Our Main Businesses

Office Equipment Business

Manufacturing and sales of staplers; staples; paper-made staple staplers; electronic staplers; electric staple removers; auto staplers; automatic binding machines; numbering machines; punches; stamp pads; red ink pads; time recorders; time cards; checkwriters; sign-making machines; label printers; tube markers; signboard creation software; signboard creation machines; parallel rulers, etc.

Industrial Equipment Business

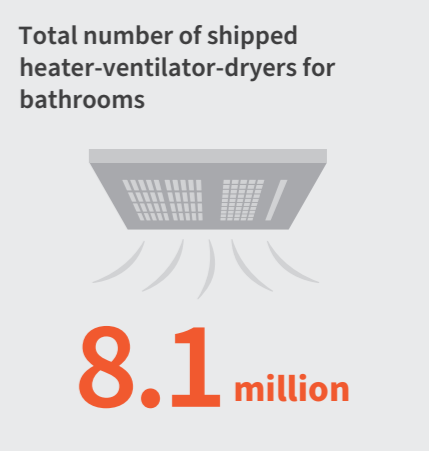
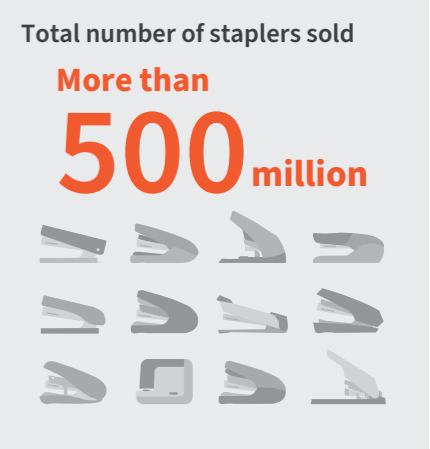
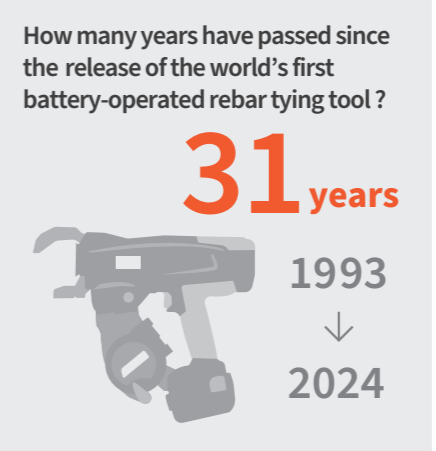
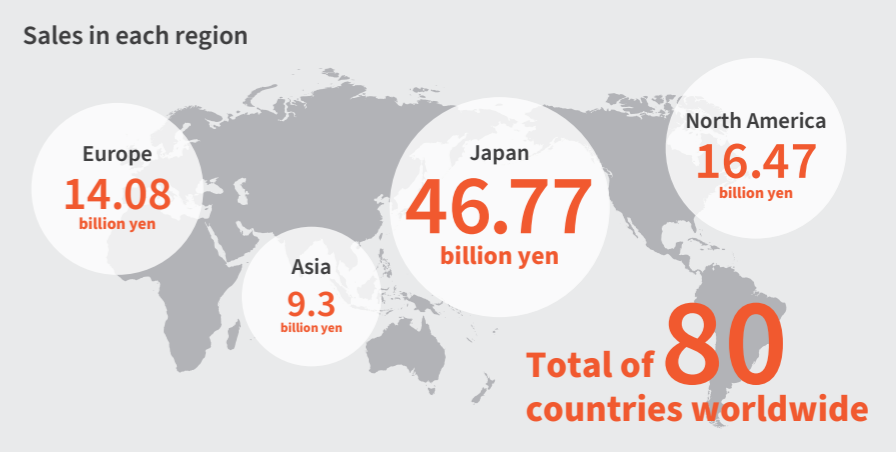
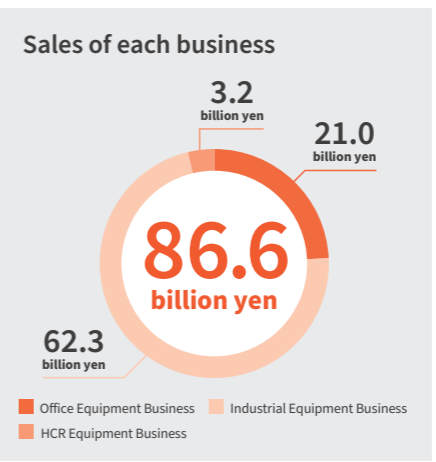
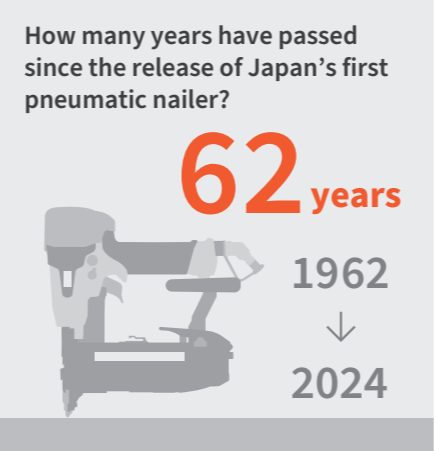
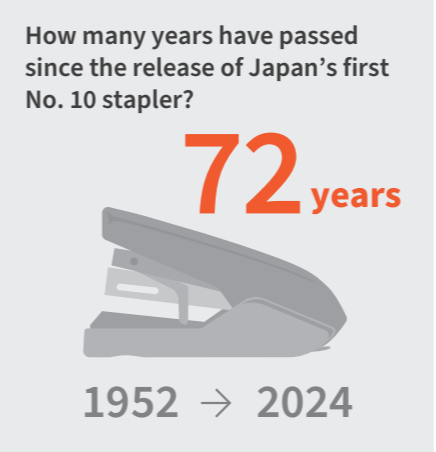
Manufacturing and sales of pneumatic nailers; hand tackers; screw driving machines; staples; nails; screws; air compressors; laser markers; rebar tying tools; pin insertion machines for concrete; gas nailers; hammer drills; battery-operated impact drivers; battery-operated circular saws; battery-operated pin nailers; vegetable binders; tape binding tools; bag closing machines; battery-operated pruning scissors; heater-ventilator-dryers for bathrooms; 24-hour ventilation systems; floor heating systems; disposer systems; residential fire alarms, etc.

HCR Equipment Business

Manufacturing and sales of wheelchairs and other welfare equipment.

MAX in numbers

Fiscal year ended March, 2024



Our bases in Japan				
	Name	Address	Phone No.	
Sales base, etc.	Head Office	103-8502 : 6-6, Nihonbashi Hakozaki-cho, Chuo-ku, Tokyo	(03)3669-0311	
	Sapporo Branch	060-0041 : 6-12-8, Odori Higashi, Chuo-ku, Sapporo-shi, Hokkaido	(011)261-7141	
	Sendai Branch	984-0015 : 5-3-4, Oroshi-machi, Wakabayashi-ku, Sendai-shi, Miyazaki Prefecture	(022)236-4121	
	Morioka Sales Office	020-0824 : 2-10-7, Higashianiwa, Morioka-shi, Iwate Prefecture	(019)621-3541	
	Tokyo Branch	103-8502 : 6-6, Nihonbashi Hakozaki-cho, Chuo-ku, Tokyo	(03)3669-8101	
	Niigata Sales Office	955-0081 : 2-14-28, Higashiuradate, Sanjo-shi, Niigata Prefecture	(0256)34-2112	
	Tama Sales Office	190-0022 : 5-17-19, Nishiki-cho, Tachikawa-shi, Tokyo	(042)528-3051	
	Gunma Sales Office	370-0031 : 412, Kamiorui-machi, Takasaki-shi, Gunma Prefecture	(027)353-7075	
	Nagano Sales Office	399-0033 : 8155, Sasaga, Matsumoto-shi, Nagano Prefecture	(0263)26-4377	
	Eastern Kanto Sales Office	300-0811 : 915-1, Kamitakatsu, Tsuchiura-shi, Ibaraki Prefecture	(029)835-7322	
	Yokohama Sales Office	241-0822 : 7-6, Sachigaoka, Asahi-ku, Yokohama-shi, Kanagawa Prefecture	(045)364-5661	
	Nagoya Branch	462-0819 : 2-4-87, Heian, Kita-ku, Nagoya-shi, Aichi Prefecture	(052)918-8619	
	Shizuoka Sales Office	420-0067 : 29-1, Saiwai-cho, Aoi-ku, Shizuoka-shi, Shizuoka Prefecture	(054)205-3535	
	Kanazawa Sales Office	921-8061 : 2-15, Morito, Kanazawa-shi, Ishikawa Prefecture	(076)240-1871	
	Osaka Branch	553-0004 : 1-3-18, Tamagawa, Fukushima-ku, Osaka-shi, Osaka Prefecture	(06)6444-2077	
	Keiji Sales Office	612-8414 : 195, Takedadangawara-cho, Fushimi-ku, Kyoto-shi, Kyoto Prefecture	(075)645-5061	
	Okayama Sales Office	700-0971 : 3-23-28, Noda, Kita-ku, Okayama-shi, Okayama Prefecture	(086)246-9516	
	Shikoku Sales Office	761-8056 : 761-3, Kamitenjin-cho, Takamatsu-shi, Kagawa Prefecture	(087)866-5599	
	Matsuyama Sales Office	790-0036 : 1F, 1st Shiraishi Building, 6-1-22, Oguri, Matsuyama-shi, Ehime Prefecture	(089)913-1893	
	Hiroshima Branch	733-0035 : 7-11-24, Minamikanon, Nishi-ku, Hiroshima-shi, Hiroshima Prefecture	(082)291-6331	
	Fukuoka Branch	812-0006 : 1-5-1, Kamimuta, Hakata-ku, Fukuoka-shi, Fukuoka Prefecture	(092)411-5416	
	South Kyushu Sales Office	891-0115 : 3-24, Tokai-cho, Kagoshima-shi, Kagoshima Prefecture	(099)269-5347	
	Okinawa Sales Office	901-2132 : 2-17-1, Iso, Urasoe-shi, Okinawa Prefecture	(098)875-3577	
	Eastern Japan Order Reception Center	370-0031 : 412, Kamiorui-machi, Takasaki-shi, Gunma Prefecture	(0120)166-199	
	Western Japan Order Reception Center	553-0004 : 1-3-18, Tamagawa, Fukushima-ku, Osaka-shi, Osaka Prefecture	(0120)113-850	
	Head Office of MAX Sales Co., Ltd.	331-0823 : 3-421, Nisshin-cho, Kita-ku, Saitama-shi, Saitama Prefecture	(048)651-5346	
	Saitama Sales Office	331-0823 : 3-421, Nisshin-cho, Kita-ku, Saitama-shi, Saitama Prefecture	(048)651-5341	
	Development	Research & Development Division	370-1117 : 1848, Kawai, Tamamura-machi, Sawa-gun, Gunma Prefecture	(0270)30-2050
	Manufacturing	Tamamura Factory	370-1117 : 1848, Kawai, Tamamura-machi, Sawa-gun, Gunma Prefecture	(0270)65-1381
		Fujioka Factory	375-0004 : 33-1, Mori, Fujioka-shi, Gunma Prefecture	(0274)42-0981
		Yoshii Factory	370-2103 : 800-2, Iwai, Yoshii-machi, Takasaki-shi, Gunma Prefecture	(027)320-4777
		Kuragano Factory	370-1201 : 2644, Kuragano-machi, Takasaki-shi, Gunma Prefecture	(027)346-2494
		Takasaki Office	370-0031 : 412, Kamiorui-machi, Takasaki-shi, Gunma Prefecture	(027)352-4570
		MAX Takasaki Co., Ltd.	370-2103 : 800-2, Iwai, Yoshii-machi, Takasaki-shi, Gunma Prefecture	(027)320-4777
		MAX Joban Co., Ltd.	319-1725 : 425, Fujigaoka, Sekimoto-cho, Kitaibaraki-shi, Ibaraki Prefecture	(0293)46-1770
		Logistics & Service	MAX Logistics Warehouse Co., Ltd.	370-2103 : 866-1, Iwai, Yoshii-machi, Takasaki-shi, Gunma Prefecture
MAX Engineering Service Co., Ltd.	MAX Engineering Service Co., Ltd.	370-0031 : 412, Kamiorui-machi, Takasaki-shi, Gunma Prefecture	(027)353-6707	
	Sapporo Service Station	060-0041 : 6-12-8, Odori Higashi, Chuo-ku, Sapporo-shi, Hokkaido	(011)231-6487	
	Sendai Service Station	984-0015 : 5-3-4, Oroshi-machi, Wakabayashi-ku, Sendai-shi, Miyazaki Prefecture	(022)237-0778	
	Saitama Service Station	331-0823 : 3-421, Nisshin-cho, Kita-ku, Saitama-shi, Saitama Prefecture	(048)667-6448	
	Takasaki Service Station	370-0031 : 412, Kamiorui-machi, Takasaki-shi, Gunma Prefecture	(027)350-7820	
	Takasaki OP Service Station	370-0031 : 412, Kamiorui-machi, Takasaki-shi, Gunma Prefecture	(027)345-3039	
	Nagoya Service Station	462-0819 : 2-4-87, Heian, Kita-ku, Nagoya-shi, Aichi Prefecture	(052)918-8624	
	Osaka Service Station	553-0004 : 1-3-18, Tamagawa, Fukushima-ku, Osaka-shi, Osaka Prefecture	(06)6444-2089	
	Hiroshima Service Station	733-0035 : 7-11-24, Minamikanon, Nishi-ku, Hiroshima-shi, Hiroshima Prefecture	(082)291-5670	
	Fukuoka Service Station	812-0006 : 1-5-1, Kamimuta, Hakata-ku, Fukuoka-shi, Fukuoka Prefecture	(092)451-6430	
	Tokyo Office	103-0015 : 6-2, Nihonbashi Hakozaki-cho, Chuo-ku, Tokyo	(03)5623-4611	
	Operating Company	Kawamura Cycle Co., Ltd.	651-2411 : 3-9-1, Kamishinchi, Nishi-ku, Kobe-shi, Hyogo Prefecture	(078)969-2800
	Our overseas bases			
Sales	MAX USA CORP.	205 Express Street, Plainview, New York 11803, U.S.A.	(1)516-741-3151	
	TEXAS OFFICE	405 Powerhouse Street, Suite 502, McKinney, Texas 75071, U.S.A.	(1)972-542-5055	
	CALIFORNIA OFFICE	3002 Dow Avenue, Suite 222, Tustin, California 92780, U.S.A.	(1)714-852-3267	
	NORTH CAROLINA OFFICE	9115 Old Statesville Rd Unit E, Charlotte, NC 28269, U.S.A.	(1)704-919-0797	
	MAX EUROPE B.V.	Antennestraat 45, 1322AH Almere, The Netherlands	(31)36-546-9669	
	GERMAN OFFICE	Bonner Str. 203d, 40589 Düsseldorf, Germany	(49)211-5408-2877	
	Lighthouse(UK)Ltd.	Unit23, Charnwood Business Park North Road Loughborough Leicestershire, England	(44)01509-264500	
	Lighthouse Europe B.V.	Centurionbaan 42 D, 3769 AV Soesterberg, The Netherlands	(31)35-588-0010	
	MAX ASIA PTE. LTD.	101 Cecil Street #16-01 Tong Eng Building, Singapore 069533	(65)6226-2180	
	MUMBAI OFFICE	Oberoï Splendor, A-1004, J.V.L.R., Opp. Majas Bus Depot, Andheri(East) Mumbai-400 060, India	(91)98199-94468	
	HO CHI MINH OFFICE	P.721.4,7 th floor, Me Linh Point Tower, No.02 Ngo Duc Ke Street, District 1, HCMC Vietnam	(84)28-963-207418	
	MAX CO.,(H.K.)LTD.	7-B, Chuan-Kei-Fty Bldg., 15-23, Kin Hong St., Kwai Chung, New Territories, Hong Kong	(852)2426-2106	
	MAX (SHANGHAI) CO.,LTD.	ROOM 403, No.1, Lane 280, Hongjing Road, Minhang District Shanghai, P.R. China	(86)021-2601-5620	
Manufacturing	MAX (THAILAND) CO.,LTD.	WHA Eastern Seaboard Industrial Estate 1 911/3 Moo 5, Khaokansong Sub-District, Sriracha District, Chonburi 20110, Thailand	(66)3312-4584	
	MAX FASTENERS(M)SDN.BHD.	Lot 55, Kulim Industrial Estate, 09000 Kulim, Kedah, Malaysia	(60)4-489-2001	
	MAX ELECTRONICS MACHINE CO., (SHENZHEN) LTD.	No.12 of Jiayi Industrial Park, GuiYue Road, Guixiang Community, Guanlan Town, LongHua District, Shenzhen City, Guangdong province, P.R. China	(86)755-2752-0952	
	MAX ELECTRONICS MACHINE (SUZHOU) CO.,LTD.	Building17, SND-EPZ Sub-Industrial Park, No. 666 Jianlin Road, SND, Suzhou City, Jiangsu province, P.R. China	(86)512-6808-8916	
	ZHANGZHOU LEATAI MEDICAL INSTRUMENTS CO.,LTD.	NO.515, Yintang Industrial Zone, Gunong Farm, Changtai District, Zhangzhou City, Fujian Province, P.R. China	(86)596-6328803	



At MAX Co., Ltd., the protection of customers' information assets and our internal information assets are among the most important basic policies in our corporate management. That is why we have obtained the information security management system certification under ISO/IEC 27001 for our Sales Division, Head Office, Repair Division, Production Engineering Division, Procurement Division, Distribution Warehouses, and Integrated Digital Innovation Department.



We have also obtained business continuity management system certification under ISO 22301 to ensure the continuous production and supply of our priority product groups. This certification applies to our Tamamura, Fujioka, Yoshii, and Kuragano Factories as well as the production support department and information systems management department associated with those factories.



JQA-1916

MAX Co., Ltd. is engaged in the design, development, and manufacturing of pneumatic nailers, staplers, electronic staplers, sign cutting and printing machines, and home environment equipment, as well as their consumables, and has obtained certification for its quality management system (ISO9001)



JQA-EM0462

MAX Co., Ltd. has acquired certification for its environmental management system (ISO14001) at its Tamamura Factory, Fujioka Factory, Yoshii Factory, Takasaki Office and Kuragano Factory.



This printed matter is made of FSC® certified material and FSC® controlled raw material, as well as UV ink without VOC (volatile organic compounds), in order to be eco-friendly.

MAX CO.,LTD.
<https://www.max-ltd.co.jp/>